

## Product datasheet for **TA335647**

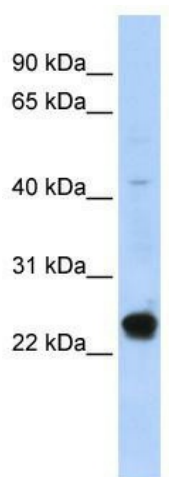
### **GTL3 (CFAP20) Rabbit Polyclonal Antibody**

#### **Product data:**

Product Type:	Primary Antibodies
Applications:	WB
Recommended Dilution:	WB
Reactivity:	Human
Host:	Rabbit
Isotype:	IgG
Clonality:	Polyclonal
Immunogen:	The immunogen for Anti-C16orf80 Antibody: synthetic peptide directed towards the middle region of human C16orf80. Synthetic peptide located within the following region: IKLPFLVMIKLNKKYFTFEVQLDDKNVRRRFRASNYQSTTRVKPFICT
Formulation:	Liquid. Purified antibody supplied in 1x PBS buffer with 0.09% (w/v) sodium azide and 2% sucrose. <i>Note that this product is shipped as lyophilized powder to China customers.</i>
Purification:	Affinity Purified
Conjugation:	Unconjugated
Storage:	Store at -20°C as received.
Stability:	Stable for 12 months from date of receipt.
Predicted Protein Size:	23 kDa
Gene Name:	cilia and flagella associated protein 20
Database Link:	<a href="#">NP_037374</a> <a href="#">Entrez Gene 29105 Human</a> <a href="#">Q9Y6A4</a>
Background:	The exact function of C16orf80 remains unknown.
Synonyms:	C16orf80; EVORF; fSAP23; GTL3
Note:	Immunogen Sequence Homology: Dog: 100%; Pig: 100%; Rat: 100%; Goat: 100%; Horse: 100%; Human: 100%; Mouse: 100%; Bovine: 100%; Rabbit: 100%; Zebrafish: 100%; Guinea pig: 100%
Protein Families:	Transcription Factors



[View online »](#)

**Product images:**


WB Suggested Anti-C16orf80 Antibody Titration:  
 0.2-1 ug/ml; ELISA Titer: 1:62500; Positive Control:  
 HepG2 cell lysate; C16orf80 is supported by  
 BioGPS gene expression data to be expressed in  
 HepG2