

Product datasheet for **TA335646**

GTL3 (CFAP20) Rabbit Polyclonal Antibody

Product data:

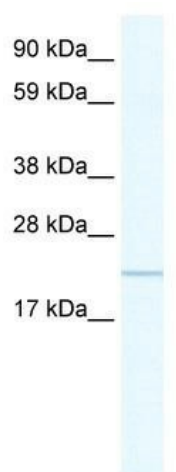
Product Type:	Primary Antibodies
Applications:	WB
Recommended Dilution:	WB
Reactivity:	Human
Host:	Rabbit
Isotype:	IgG
Clonality:	Polyclonal
Immunogen:	The immunogen for Anti-GTL3 Antibody: synthetic peptide directed towards the C terminal of human GTL3. Synthetic peptide located within the following region: YGTNYIETLRVQIHANCRIRRVYFSDRLYSEDELPAEFKLYLPVQNKAKQ
Formulation:	Liquid. Purified antibody supplied in 1x PBS buffer with 0.09% (w/v) sodium azide and 2% sucrose. <i>Note that this product is shipped as lyophilized powder to China customers.</i>
Purification:	Affinity Purified
Conjugation:	Unconjugated
Storage:	Store at -20°C as received.
Stability:	Stable for 12 months from date of receipt.
Predicted Protein Size:	23 kDa
Gene Name:	cilia and flagella associated protein 20
Database Link:	NP_037374 Entrez Gene 29105 Human Q9Y6A4
Background:	The function of Anti-GTL3 has not yet been determined.
Synonyms:	C16orf80; EVORF; fSAP23; GTL3
Note:	Immunogen Sequence Homology: Dog: 100%; Pig: 100%; Rat: 100%; Horse: 100%; Human: 100%; Mouse: 100%; Bovine: 100%; Rabbit: 100%; Zebrafish: 100%; Guinea pig: 100%; Goat: 77%



[View online »](#)

Protein Families: Transcription Factors

Product images:



WB Suggested Anti-GTL3 Antibody Titration: 0.2-1 ug/ml; ELISA Titer: 1:62500; Positive Control: Human Placenta