

## Product datasheet for **TA335645**

### **SAP30BP Rabbit Polyclonal Antibody**

#### **Product data:**

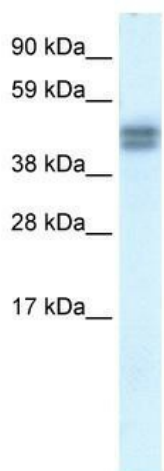
Product Type:	Primary Antibodies
Applications:	IHC, WB
Recommended Dilution:	WB, IHC
Reactivity:	Human
Host:	Rabbit
Isotype:	IgG
Clonality:	Polyclonal
Immunogen:	The immunogen for Anti-SAP30BP Antibody: synthetic peptide directed towards the N terminal of human SAP30BP. Synthetic peptide located within the following region: AEEKGGLVSDAYGEDDFSRLLGGDEDDGYEEEEEDENSRQSEDDDDSETEKPEA
Formulation:	Liquid. Purified antibody supplied in 1x PBS buffer with 0.09% (w/v) sodium azide and 2% sucrose. <i>Note that this product is shipped as lyophilized powder to China customers.</i>
Purification:	Affinity Purified
Conjugation:	Unconjugated
Storage:	Store at -20°C as received.
Stability:	Stable for 12 months from date of receipt.
Predicted Protein Size:	34 kDa
Gene Name:	SAP30 binding protein
Database Link:	<a href="#">NP_037392</a> <a href="#">Entrez Gene 29115 Human</a> <a href="#">Q9UHR5</a>
Background:	SAP30BP is a component of a histone deacetylase complex conserved among eukaryotic organisms. This complex is active in deacetylating core histone octamers, but inactive in deacetylating nucleosomal histones due to the inability of the histone binding proteins RbAp46 and RbAp48 to gain access to nucleosomal histones.
Synonyms:	HCNGP; HTRG; HTRP



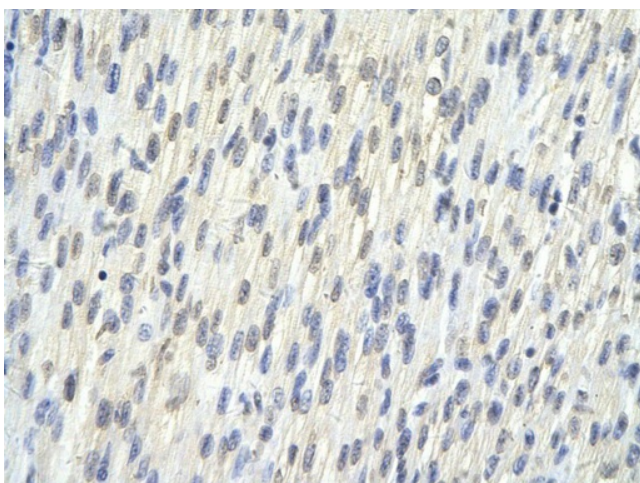
[View online »](#)

**Note:** Immunogen Sequence Homology: Rat: 100%; Human: 100%; Mouse: 100%; Rabbit: 100%; Dog: 93%; Pig: 93%; Horse: 93%; Guinea pig: 93%; Bovine: 86%

## Product images:



WB Suggested Anti-SAP30BP Antibody Titration:  
0.2-1 ug/ml; ELISA Titer: 1:312500; Positive  
Control: Human Placenta



Rabbit Anti-SAP30BP antibody; Paraffin  
Embedded Tissue: Human Heart cell; Cellular  
Data: Epithelial cells of renal tubule; Antibody  
Concentration: 4.0-8.0 ug/ml; Magnification: 400X