

## Product datasheet for **TA335644**

### SAP30BP Rabbit Polyclonal Antibody

#### Product data:

Product Type:	Primary Antibodies
Applications:	WB
Recommended Dilution:	WB
Reactivity:	Human
Host:	Rabbit
Isotype:	IgG
Clonality:	Polyclonal
Immunogen:	The immunogen for Anti-SAP30BP Antibody: synthetic peptide directed towards the C terminal of human SAP30BP. Synthetic peptide located within the following region: WSEDSYYEALAKAQKIEMDKLEKAKKERTKIEFVTGKKGTTTNTATSTTT
Formulation:	Liquid. Purified antibody supplied in 1x PBS buffer with 0.09% (w/v) sodium azide and 2% sucrose. <i>Note that this product is shipped as lyophilized powder to China customers.</i>
Purification:	Affinity Purified
Conjugation:	Unconjugated
Storage:	Store at -20°C as received.
Stability:	Stable for 12 months from date of receipt.
Predicted Protein Size:	34 kDa
Gene Name:	SAP30 binding protein
Database Link:	<a href="#">NP_037392</a> <a href="#">Entrez Gene 29115 Human Q9UHR5</a>
Background:	SAP30BP expressed as a fusion polypeptide with a fluorescent protein in the nucleus of HeLa cells. SAP30BP induces cell death. The interaction of SAP30BP with SAP30 in its conserved domain implies that this protein family, as the products of immediate-early genes, comprise functional molecules involved in the transcriptional regulation of cells, which might be related to the inhibition of some cell survival genes. SAP30BP may also be involved in the regulation of beta-2-microglobulin genes.

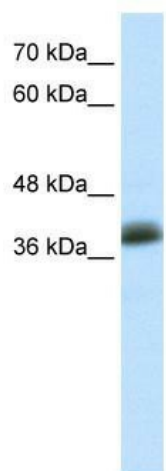


[View online »](#)

**Synonyms:** HCNGP; HTRG; HTRP

**Note:** Immunogen Sequence Homology: Dog: 100%; Pig: 100%; Rat: 100%; Horse: 100%; Human: 100%; Mouse: 100%; Bovine: 100%; Rabbit: 100%; Zebrafish: 100%; Guinea pig: 100%

**Product images:**



WB Suggested Anti-SAP30BP Antibody Titration:  
0.2-1 ug/ml; ELISA Titer: 1:12500; Positive Control:  
MCF7 cell lysate; SAP30BP is supported by  
BioGPS gene expression data to be expressed in  
MCF7