

Product datasheet for **TA335643**

MRF (MYRF) Rabbit Polyclonal Antibody

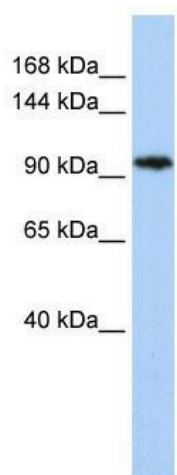
Product data:

Product Type:	Primary Antibodies
Applications:	WB
Recommended Dilution:	WB
Reactivity:	Human
Host:	Rabbit
Isotype:	IgG
Clonality:	Polyclonal
Immunogen:	The immunogen for Anti-C11orf9 Antibody: synthetic peptide directed towards the N terminal of human C11orf9. Synthetic peptide located within the following region: GTGPPIKAEPKAPYAPGTLPDSPPDSGSEAYSPQQVNEPHELLRTITPETL
Formulation:	Liquid. Purified antibody supplied in 1x PBS buffer with 0.09% (w/v) sodium azide and 2% sucrose. <i>Note that this product is shipped as lyophilized powder to China customers.</i>
Purification:	Affinity Purified
Conjugation:	Unconjugated
Storage:	Store at -20°C as received.
Stability:	Stable for 12 months from date of receipt.
Predicted Protein Size:	120 kDa
Gene Name:	myelin regulatory factor
Database Link:	NP_037411 Entrez Gene 745 Human Q9Y2G1
Background:	C11orf9 is a single-pass membrane protein.
Synonyms:	C11orf9; MRF; Ndt80; pqn-47
Note:	Immunogen Sequence Homology: Dog: 100%; Pig: 100%; Rat: 100%; Horse: 100%; Human: 100%; Mouse: 100%; Bovine: 100%; Rabbit: 100%; Guinea pig: 100%; Zebrafish: 79%



[View online »](#)

Product images:



WB Suggested Anti-C11orf9 Antibody Titration:
0.2-1 ug/ml; ELISA Titer: 1:312500; Positive
Control: MCF7 cell lysate