

## Product datasheet for **TA335640**

### SERTAD1 Rabbit Polyclonal Antibody

#### Product data:

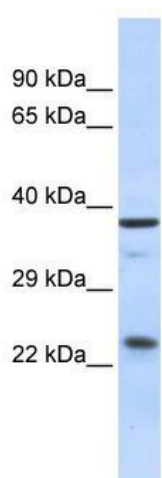
Product Type:	Primary Antibodies
Applications:	WB
Recommended Dilution:	WB
Reactivity:	Human
Host:	Rabbit
Isotype:	IgG
Clonality:	Polyclonal
Immunogen:	The immunogen for Anti-SERTAD1 Antibody: synthetic peptide directed towards the N terminal of human SERTAD1. Synthetic peptide located within the following region: QAPPAVASSSLFDLSVLKLLHHSLLQQSEPDRLRHLVLLVNTLRRIQASMAPA
Formulation:	Liquid. Purified antibody supplied in 1x PBS buffer with 0.09% (w/v) sodium azide and 2% sucrose.
Purification:	Affinity Purified
Conjugation:	Unconjugated
Storage:	Store at -20°C as received.
Stability:	Stable for 12 months from date of receipt.
Predicted Protein Size:	25 kDa
Gene Name:	SERTA domain containing 1
Database Link:	<a href="#">NP_037508</a> <a href="#">Entrez Gene 29950 Human Q9UHV2</a>
Background:	SERTA is a transcriptional regulator that interacts with the PHD-bromodomain of co-repressors of Kruppel-associated box (KRAB)-mediated repression, KRIP-1(TIF1beta) and TIF1alpha, as well as the co-activator/adaptor p300/CBP. It is a component of a multiprotein complex containing E2F-1 and DP-1.
Synonyms:	SEI1; TRIP-Br1
Note:	Immunogen Sequence Homology: Human: 100%; Dog: 93%; Pig: 93%; Rat: 93%; Bovine: 93%; Rabbit: 93%; Guinea pig: 93%; Mouse: 86%



[View online »](#)

Protein Families: Transcription Factors

### Product images:



WB Suggested Anti-SERTAD1 Antibody Titration:  
0.2-1 ug/ml; ELISA Titer: 1:62500; Positive Control:  
Human Muscle