

Product datasheet for **TA335639**

SERTAD1 Rabbit Polyclonal Antibody

Product data:

Product Type:	Primary Antibodies
Applications:	IHC, WB
Recommended Dilution:	WB, IHC
Reactivity:	Human
Host:	Rabbit
Isotype:	IgG
Clonality:	Polyclonal
Immunogen:	The immunogen for Anti-SERTAD1 Antibody: synthetic peptide directed towards the N terminal of human SERTAD1. Synthetic peptide located within the following region: MLSKGLKRKREEEEEKEPLAVDSWWLDPGHTAVAQAPPAVASSSLFDLSV
Formulation:	Liquid. Purified antibody supplied in 1x PBS buffer with 0.09% (w/v) sodium azide and 2% sucrose. <i>Note that this product is shipped as lyophilized powder to China customers.</i>
Purification:	Protein A purified
Conjugation:	Unconjugated
Storage:	Store at -20°C as received.
Stability:	Stable for 12 months from date of receipt.
Predicted Protein Size:	25 kDa
Gene Name:	SERTA domain containing 1
Database Link:	NP_037508 Entrez Gene 29950 Human Q9UHV2
Background:	SERTA is a transcriptional regulator that interacts with the PHD-bromodomain of co-repressors of Kruppel-associated box (KRAB)-mediated repression, KRIP-1(TIF1beta) and TIF1alpha, as well as the co-activator/adaptor p300/CBP. It is a component of a multiprotein complex containing E2F-1 and DP-1.
Synonyms:	SEI1; TRIP-Br1

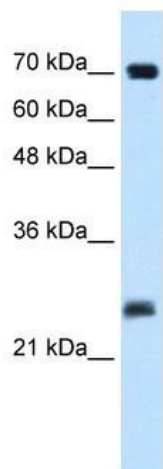


[View online »](#)

Note: Immunogen Sequence Homology: Rat: 100%; Human: 100%; Mouse: 100%; Dog: 93%; Pig: 93%; Bovine: 93%; Guinea pig: 93%; Rabbit: 92%; Yeast: 91%; Horse: 90%

Protein Families: Transcription Factors

Product images:



WB Suggested Anti-SERTAD1 Antibody Titration: 0.125 ug/ml; ELISA Titer: 1:312500; Positive Control: Human Placenta



Human Muscle