

Product datasheet for **TA335637**

PAX8 Rabbit Polyclonal Antibody

Product data:

Product Type:	Primary Antibodies
Applications:	WB
Recommended Dilution:	WB
Reactivity:	Human
Host:	Rabbit
Isotype:	IgG
Clonality:	Polyclonal
Immunogen:	The immunogen for Anti-PAX8 Antibody is: synthetic peptide directed towards the C-terminal region of Human PAX8. Synthetic peptide located within the following region: TPSNTPLGRNLSTHQYTPVADPHSPFAIKQETPEVSSSSSTPSSLSSSA
Formulation:	Liquid. Purified antibody supplied in 1x PBS buffer with 0.09% (w/v) sodium azide and 2% sucrose. <i>Note that this product is shipped as lyophilized powder to China customers.</i>
Purification:	Affinity Purified
Conjugation:	Unconjugated
Storage:	Store at -20°C as received.
Stability:	Stable for 12 months from date of receipt.
Predicted Protein Size:	48 kDa
Gene Name:	paired box 8
Database Link:	NP_054698 Entrez Gene 7849 Human Q06710
Background:	PAX8 is a member of the paired box (PAX) family of transcription factors. Members of this family typically contain a paired box domain, an octapeptide, and a paired-type homeodomain. This nuclear protein is involved in thyroid follicular cell development and expression of thyroid-specific genes. Mutations in its gene have been associated with thyroid dysgenesis, thyroid follicular carcinomas and atypical follicular thyroid adenomas.
Synonyms:	OTTHUMP00000158659; OTTHUMP00000158660; paired box 8; paired domain gene 8



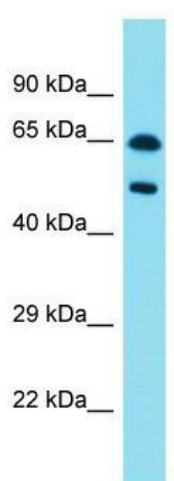
[View online »](#)

Note: Immunogen Sequence Homology: Dog: 100%; Pig: 100%; Horse: 100%; Human: 100%; Bovine: 100%; Rat: 93%; Mouse: 93%; Guinea pig: 93%

Protein Families: Druggable Genome, Transcription Factors

Protein Pathways: Pathways in cancer, Thyroid cancer

Product images:



Host: Rabbit; Target Name: PAX8; Sample Tissue: Pancreas Tumor lysates; Antibody Dilution: 1.0 ug/ml