

Product datasheet for **TA335635**

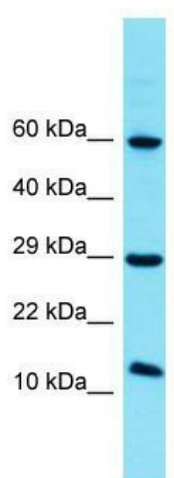
FAM32A Rabbit Polyclonal Antibody

Product data:

Product Type:	Primary Antibodies
Applications:	WB
Recommended Dilution:	WB
Reactivity:	Human
Host:	Rabbit
Isotype:	IgG
Clonality:	Polyclonal
Immunogen:	The immunogen for Anti-FAM32A Antibody is: synthetic peptide directed towards the N-terminal region of Human FAM32A. Synthetic peptide located within the following region: DKAKLLEAMGTSKKNEEEKRRGLDKRTPAQAAFEKMQEKRQMERILKKAS
Formulation:	Liquid. Purified antibody supplied in 1x PBS buffer with 0.09% (w/v) sodium azide and 2% sucrose. <i>Note that this product is shipped as lyophilized powder to China customers.</i>
Purification:	Affinity Purified
Conjugation:	Unconjugated
Storage:	Store at -20°C as received.
Stability:	Stable for 12 months from date of receipt.
Predicted Protein Size:	12 kDa
Gene Name:	family with sequence similarity 32 member A
Database Link:	NP_054796 Entrez Gene 26017 Human Q9Y421
Background:	Isoform 1, but not isoform 2 or isoform 3, may induce G2 arrest and apoptosis. FAM32A may also increase cell sensitivity to apoptotic stimuli.
Synonyms:	OTAG-12; OTAG12
Note:	Immunogen Sequence Homology: Dog: 100%; Pig: 100%; Rat: 100%; Horse: 100%; Human: 100%; Bovine: 100%; Guinea pig: 100%; Mouse: 92%



[View online »](#)

Product images:

Host: Rabbit; Target Name: FAM32A; Sample Tissue: HCT15 Whole Cell lysates; Antibody Dilution: 1.0 ug/ml. FAM32A is supported by BioGPS gene expression data to be expressed in HCT15