

Product datasheet for **TA335630**

RBPSUHL (RBPJL) Rabbit Polyclonal Antibody

Product data:

| | |
|-------------------------|--|
| Product Type: | Primary Antibodies |
| Applications: | WB |
| Recommended Dilution: | WB |
| Reactivity: | Human |
| Host: | Rabbit |
| Isotype: | IgG |
| Clonality: | Polyclonal |
| Immunogen: | The immunogen for Anti-RBPJL Antibody: synthetic peptide directed towards the N terminal of human RBPJL. Synthetic peptide located within the following region: AHQAGETGPTVCGYMGGLDSASGSATETQKLNFEQQPDSREFGCAKTLTLYIS |
| Formulation: | Liquid. Purified antibody supplied in 1x PBS buffer with 0.09% (w/v) sodium azide and 2% sucrose. <i>Note that this product is shipped as lyophilized powder to China customers.</i> |
| Purification: | Protein A purified |
| Conjugation: | Unconjugated |
| Storage: | Store at -20°C as received. |
| Stability: | Stable for 12 months from date of receipt. |
| Predicted Protein Size: | 57 kDa |
| Gene Name: | recombination signal binding protein for immunoglobulin kappa J region like |
| Database Link: | NP_055091 Entrez Gene 11317 Human Q9UBG7 |



[View online »](#)

Background:

In mouse, recombining binding protein L (RBP-L) is a transcription factor that binds to DNA sequences almost identical to that bound by the Notch receptor signalling pathway transcription factor RBP-J. However, unlike RBP-J, RBP-L does not interact with Notch receptors. RBP-L has been shown to activate transcription in concert with Epstein-Barr virus nuclear antigen-2 (EBNA2). RBPSUHL is similar in sequence to the mouse RPB-L protein and Drosophila suppressor of hairless protein. In mouse, recombining binding protein L (RBP-L) is a transcription factor that binds to DNA sequences almost identical to that bound by the Notch receptor signalling pathway transcription factor RBP-J. However, unlike RBP-J, RBP-L does not interact with Notch receptors. RBP-L has been shown to activate transcription in concert with Epstein-Barr virus nuclear antigen-2 (EBNA2). The protein encoded by this gene is similar in sequence to the mouse RPB-L protein and Drosophila suppressor of hairless protein.

Synonyms:

RBPL; RBPSUHL; SUHL

Note:

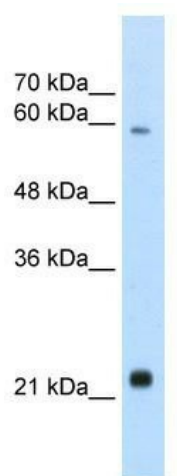
Immunogen Sequence Homology: Human: 100%; Dog: 86%; Pig: 86%; Rat: 86%; Horse: 86%; Mouse: 86%; Bovine: 86%; Guinea pig: 86%

Protein Families:

Druggable Genome, Transcription Factors

Protein Pathways:

Notch signaling pathway

Product images:

WB Suggested Anti-RBPJL Antibody Titration: 2.5 ug/ml; Positive Control: Jurkat cell lysate