

Product datasheet for **TA335627**

Frequenin (NCS1) Rabbit Polyclonal Antibody

Product data:

Product Type:	Primary Antibodies
Applications:	IHC, WB
Recommended Dilution:	WB, IHC
Reactivity:	Human
Host:	Rabbit
Isotype:	IgG
Clonality:	Polyclonal
Immunogen:	The immunogen for Anti-FREQ Antibody: synthetic peptide directed towards the N terminal of human FREQ. Synthetic peptide located within the following region: MGKSNKSLKPEVVEELTRKTYFTEKEVQQWYKGFIDCPSGQLDAAGFQK
Formulation:	Liquid. Purified antibody supplied in 1x PBS buffer with 0.09% (w/v) sodium azide and 2% sucrose. <i>Note that this product is shipped as lyophilized powder to China customers.</i>
Purification:	Affinity Purified
Conjugation:	Unconjugated
Storage:	Store at -20°C as received.
Stability:	Stable for 12 months from date of receipt.
Predicted Protein Size:	22 kDa
Gene Name:	neuronal calcium sensor 1
Database Link:	NP_055101 Entrez Gene 23413 Human P62166
Background:	FREQ is a member of the neuronal calcium sensor gene family, which encode calcium-binding proteins expressed predominantly in neurons. The protein encoded by this gene regulates G protein-coupled receptor phosphorylation in a calcium-dependent manner and can substitute for calmodulin. This protein is thought to be associated with secretory granules and may be involved in the regulation of neurosecretion.
Synonyms:	FLUP; FREQ

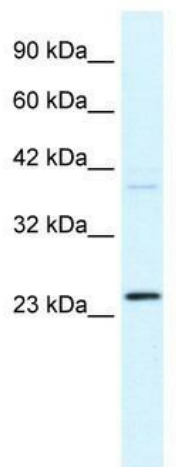


[View online »](#)

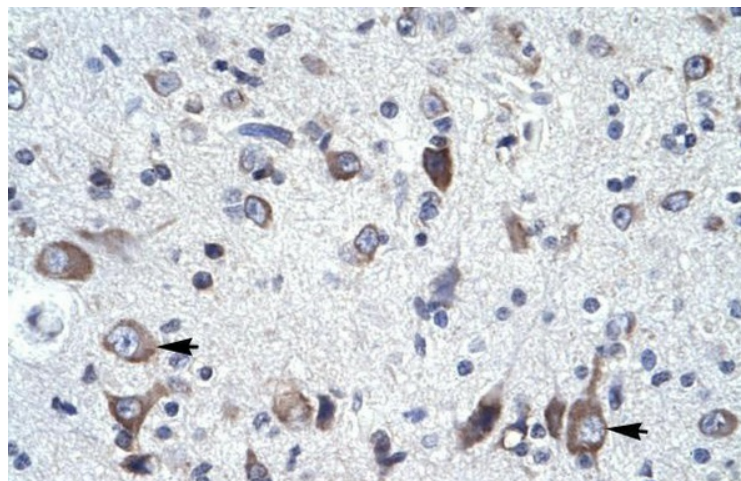
Note: Immunogen Sequence Homology: Rat: 100%; Human: 100%; Mouse: 100%; Bovine: 100%; Zebrafish: 100%

Protein Families: Druggable Genome

Product images:



WB Suggested Anti-FREQ Antibody Titration: 0.2-1 ug/ml; ELISA Titer: 1:312500; Positive Control: HepG2 cell lysate



Human Brain