

Product datasheet for **TA335626**

D4S234E (NSG1) Rabbit Polyclonal Antibody

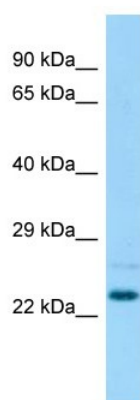
Product data:

Product Type:	Primary Antibodies
Applications:	WB
Recommended Dilution:	WB
Reactivity:	Rat
Host:	Rabbit
Isotype:	IgG
Clonality:	Polyclonal
Immunogen:	The immunogen for Anti-Nsg1 Antibody is: synthetic peptide directed towards the N-terminal region of Rat Nsg1. Synthetic peptide located within the following region: VKLGNNFAEKGTKQPLLEDGFDTIPLMTPLDVNQLQFPPDKVWVTKTE
Formulation:	Liquid. Purified antibody supplied in 1x PBS buffer with 0.09% (w/v) sodium azide and 2% sucrose.
Purification:	Affinity Purified
Conjugation:	Unconjugated
Storage:	Store at -20°C as received.
Stability:	Stable for 12 months from date of receipt.
Predicted Protein Size:	20 kDa
Gene Name:	neuronal vesicle trafficking associated 1
Database Link:	NP_055207 Entrez Gene 25247 Rat P42857
Background:	(brain-specific protein that) may be involved in neuronal fiber networks.
Synonyms:	D4S234; D4S234E; NEEP21; P21
Note:	Immunogen Sequence Homology: Pig: 100%; Rat: 100%; Human: 100%; Mouse: 100%; Bovine: 100%; Guinea pig: 100%; Rabbit: 86%
Protein Families:	Druggable Genome, Transmembrane



[View online »](#)

Product images:



Host: Rabbit; Target Name: Nsg1; Sample Tissue: Rat Testis lysates; Antibody Dilution: 1.0ug/ml