

Product datasheet for **TA335625**

DKKL1 Rabbit Polyclonal Antibody

Product data:

Product Type:	Primary Antibodies
Applications:	WB
Recommended Dilution:	WB
Reactivity:	Human
Host:	Rabbit
Isotype:	IgG
Clonality:	Polyclonal
Immunogen:	The immunogen for Anti-DKKL1 Antibody: synthetic peptide directed towards the C terminal of human DKKL1. Synthetic peptide located within the following region: DALEGGHWLSEKRHLQAIRDGLRKGTHKDVLEEGTESSSHSRLSPRKTH
Formulation:	Liquid. Purified antibody supplied in 1x PBS buffer with 0.09% (w/v) sodium azide and 2% sucrose. <i>Note that this product is shipped as lyophilized powder to China customers.</i>
Purification:	Affinity Purified
Conjugation:	Unconjugated
Storage:	Store at -20°C as received.
Stability:	Stable for 12 months from date of receipt.
Predicted Protein Size:	27 kDa
Gene Name:	dickkopf like acrosomal protein 1
Database Link:	NP_055234 Entrez Gene 27120 Human Q9UK85



[View online »](#)

Background:

The dickkopf protein family interacts with the Wnt signaling pathway and its members are characterized by two conserved cysteine-rich domains. DKKL1 is a secreted protein that has high similarity to the N-terminus of the dickkopf-3 protein and moderate similarity to that protein's C-terminus though the C-terminal cysteine residues are not conserved. The dickkopf protein family interacts with the Wnt signaling pathway and its members are characterized by two conserved cysteine-rich domains. This gene encodes a secreted protein that has high similarity to the N-terminus of the dickkopf-3 protein and moderate similarity to that protein's C-terminus though the C-terminal cysteine residues are not conserved.

Synonyms:

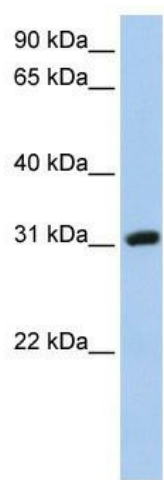
CT34; SGY; SGY-1; SGY1

Note:

Immunogen Sequence Homology: Human: 100%; Rat: 86%; Dog: 77%

Protein Families:

ES Cell Differentiation/IPS, Secreted Protein, Transmembrane

Product images:

WB Suggested Anti-DKKL1 Antibody Titration: 0.2-1 ug/ml; Positive Control: HepG2 cell lysate