

Product datasheet for **TA335624**

ASAHL (NAAA) Rabbit Polyclonal Antibody

Product data:

Product Type:	Primary Antibodies
Applications:	IHC, WB
Recommended Dilution:	WB, IHC
Reactivity:	Human
Host:	Rabbit
Isotype:	IgG
Clonality:	Polyclonal
Immunogen:	The immunogen for Anti-ASAHL Antibody: synthetic peptide directed towards the middle region of human ASAHL. Synthetic peptide located within the following region: VSWLIRATLSESENFEEAVGKLAKTPLIADVYIVGGTSPREGVMITRNR
Formulation:	Liquid. Purified antibody supplied in 1x PBS buffer with 0.09% (w/v) sodium azide and 2% sucrose. <i>Note that this product is shipped as lyophilized powder to China customers.</i>
Purification:	Affinity Purified
Conjugation:	Unconjugated
Storage:	Store at -20°C as received.
Stability:	Stable for 12 months from date of receipt.
Predicted Protein Size:	37 kDa
Gene Name:	N-acylethanolamine acid amidase
Database Link:	NP_055250 Entrez Gene 27163 Human Q02083
Background:	ASAHL is an N-acylethanolamine-hydrolyzing enzyme which is highly similar to acid ceramidase. This gene encodes an N-acylethanolamine-hydrolyzing enzyme which is highly similar to acid ceramidase. Multiple transcript variants encoding different isoforms have been found for this gene.
Synonyms:	ASAHL; PLT

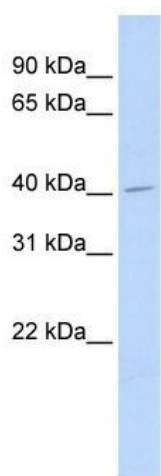


[View online »](#)

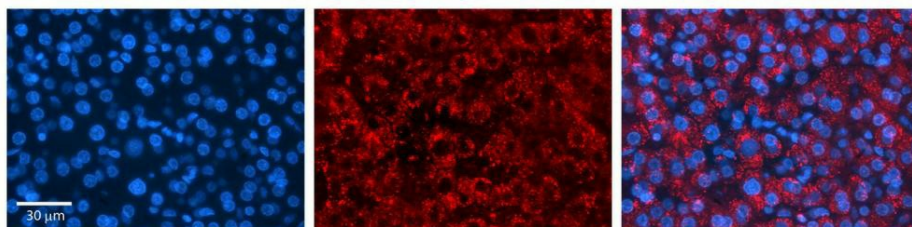
Note: Immunogen Sequence Homology: Rat: 100%; Horse: 100%; Human: 100%; Mouse: 100%; Bovine: 100%; Pig: 93%; Rabbit: 93%; Guinea pig: 92%

Protein Families: Transmembrane

Product images:



WB Suggested Anti-ASAHL Antibody Titration: 0.2-1 ug/ml; ELISA Titer: 1: 62500; Positive Control: 721_B cell lysate



Human liver tissue