

## Product datasheet for **TA335618**

### SOCS7 Rabbit Polyclonal Antibody

#### Product data:

Product Type:	Primary Antibodies
Applications:	WB
Recommended Dilution:	WB
Reactivity:	Human
Host:	Rabbit
Isotype:	IgG
Clonality:	Polyclonal
Immunogen:	The immunogen for Anti-SOCS7 Antibody is: synthetic peptide directed towards the N-terminal region of Human SOCS7. Synthetic peptide located within the following region: GSAGRELDAGRKPKLTRTQSAFSPVFSPLFTGETVSLVDVDISQRGLTS
Formulation:	Liquid. Purified antibody supplied in 1x PBS buffer with 0.09% (w/v) sodium azide and 2% sucrose. <i>Note that this product is shipped as lyophilized powder to China customers.</i>
Purification:	Affinity Purified
Conjugation:	Unconjugated
Storage:	Store at -20°C as received.
Stability:	Stable for 12 months from date of receipt.
Predicted Protein Size:	36 kDa
Gene Name:	suppressor of cytokine signaling 7
Database Link:	<a href="#">NP_055413</a> <a href="#">Entrez Gene 30837 Human</a> <a href="#">O14512</a>



[View online »](#)

**Background:** SOCS7 regulates signaling cascades probably through protein ubiquitination and/or sequestration. It functions in insulin signaling and glucose homeostasis through IRS1 ubiquitination and subsequent proteasomal degradation. It inhibits also prolactin, growth hormone and leptin signaling by preventing STAT3 and STAT5 activation, sequestering them in the cytoplasm and reducing their binding to DNA. SOCS7 may be a substrate recognition component of a SCF-like E3 ubiquitin-protein ligase complex which mediates the ubiquitination and subsequent proteasomal degradation of target proteins.

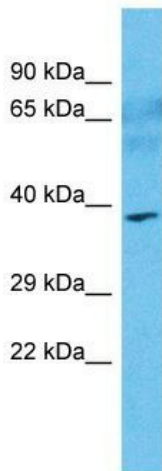
**Synonyms:** NAP4; NCKAP4

**Note:** Immunogen Sequence Homology: Horse: 100%; Human: 100%; Bovine: 100%; Rabbit: 100%; Dog: 92%; Pig: 92%; Rat: 92%; Mouse: 85%; Guinea pig: 83%

**Protein Families:** Druggable Genome

**Protein Pathways:** Jak-STAT signaling pathway

### Product images:



Host: Rabbit  
Target Name: SOCS7  
Sample Tissue: Breast Tumor Lysate  
Antibody Dilution: 1.0 µg/ml

Host: Rabbit; Target Name: SOCS7; Sample Tissue: Breast Tumor lysates; Antibody Dilution: 1.0 ug/ml