

Product datasheet for **TA335616**

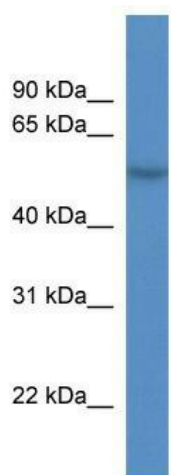
CDRL2 (CDR2L) Rabbit Polyclonal Antibody

Product data:

| | |
|-------------------------|--|
| Product Type: | Primary Antibodies |
| Applications: | WB |
| Recommended Dilution: | WB |
| Reactivity: | Human |
| Host: | Rabbit |
| Isotype: | IgG |
| Clonality: | Polyclonal |
| Immunogen: | The immunogen for Anti-CDR2L Antibody: synthetic peptide directed towards the C terminal of human CDR2L. Synthetic peptide located within the following region: VQTSRPISRDSWRDLRGGEQGGEVKAGEKLSLSQHVEAVDKRLEQSQPE |
| Formulation: | Liquid. Purified antibody supplied in 1x PBS buffer with 0.09% (w/v) sodium azide and 2% sucrose. <i>Note that this product is shipped as lyophilized powder to China customers.</i> |
| Purification: | Affinity Purified |
| Conjugation: | Unconjugated |
| Storage: | Store at -20°C as received. |
| Stability: | Stable for 12 months from date of receipt. |
| Predicted Protein Size: | 53 kDa |
| Gene Name: | cerebellar degeneration related protein 2 like |
| Database Link: | NP_055418 Entrez Gene 30850 Human Q86X02 |
| Background: | The function of CDR2L remains unknown. |
| Synonyms: | HUMPPA |
| Note: | Immunogen Sequence Homology: Human: 100%; Pig: 93%; Horse: 93%; Dog: 86%; Rat: 86% |



[View online »](#)

Product images:

WB Suggested Anti-CDR2L Antibody Titration: 0.2-1 ug/ml; ELISA Titer: 1:500; Positive Control: OVCAR-3 cell lysate. CDR2L is supported by BioGPS gene expression data to be expressed in OVCAR3