

## Product datasheet for **TA335615**

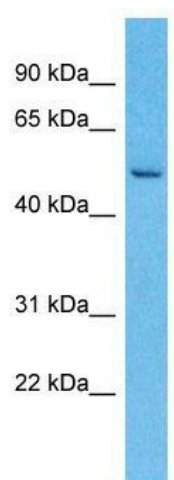
### LRRC14 Rabbit Polyclonal Antibody

#### Product data:

Product Type:	Primary Antibodies
Applications:	WB
Recommended Dilution:	WB
Reactivity:	Human
Host:	Rabbit
Isotype:	IgG
Clonality:	Polyclonal
Immunogen:	The immunogen for Anti-LRRC14 Antibody is: synthetic peptide directed towards the N-terminal region of Human LRRC14. Synthetic peptide located within the following region: QQLLQECAHCSRALLQERPSTESMQAVILGLTLARLHTSEPGASTQPLCRK
Formulation:	Liquid. Purified antibody supplied in 1x PBS buffer with 0.09% (w/v) sodium azide and 2% sucrose.
Purification:	Affinity Purified
Conjugation:	Unconjugated
Storage:	Store at -20°C as received.
Stability:	Stable for 12 months from date of receipt.
Predicted Protein Size:	54 kDa
Gene Name:	leucine rich repeat containing 14
Database Link:	<a href="#">NP_055480</a> <a href="#">Entrez Gene 9684 Human</a> <a href="#">Q15048</a>
Background:	LRRC14 belongs to the PRAME family and contains 6 LRR (leucine-rich) repeats
Synonyms:	LRRC14A
Note:	Immunogen Sequence Homology: Human: 100%



[View online »](#)

**Product images:**


Host: Rabbit; Target Name: LRRC14; Sample  
Tissue: Esophagus Tumor lysates; Antibody  
Dilution: 1.0 ug/ml