

Product datasheet for **TA335614**

ECE2 (EEF1AKMT4) Rabbit Polyclonal Antibody

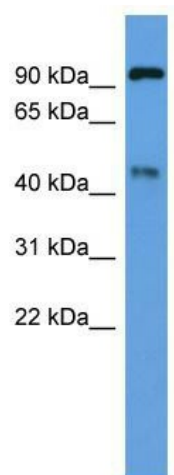
Product data:

Product Type:	Primary Antibodies
Applications:	WB
Recommended Dilution:	WB
Reactivity:	Rat
Host:	Rabbit
Isotype:	IgG
Clonality:	Polyclonal
Immunogen:	The immunogen for Anti-Ece2 Antibody: synthetic peptide corresponding to a region of Rat. Synthetic peptide located within the following region: YMVELGMLLGGQPTSTRAQMQQVLELEIQLATITVPQDQRRDEEKIYHKM
Formulation:	Liquid. Purified antibody supplied in 1x PBS buffer with 0.09% (w/v) sodium azide and 2% sucrose.
Purification:	Affinity Purified
Conjugation:	Unconjugated
Storage:	Store at -20°C as received.
Stability:	Stable for 12 months from date of receipt.
Predicted Protein Size:	86 kDa
Gene Name:	endothelin converting enzyme 2
Database Link:	NP_055508 Entrez Gene 110599583 P0DPD6
Background:	The function of Ece2 remains unknown.
Synonyms:	KIAA0604; MGC2408; MGC17664; MGC78487
Note:	Immunogen Sequence Homology: Dog: 100%; Pig: 100%; Rat: 100%; Horse: 100%; Human: 100%; Mouse: 100%; Bovine: 100%; Rabbit: 100%; Guinea pig: 100%; Zebrafish: 93%



[View online »](#)

Product images:



WB Suggested Anti-Ece2 Antibody Titration: 0.2-1 ug/ml; ELISA Titer: 1: 312500; Positive Control: Rat Brain