

## Product datasheet for TA335611

### RNF10 Rabbit Polyclonal Antibody

#### Product data:

Product Type:	Primary Antibodies
Applications:	WB
Recommended Dilution:	WB
Reactivity:	Human
Host:	Rabbit
Isotype:	IgG
Clonality:	Polyclonal
Immunogen:	The immunogen for Anti-RNF10 Antibody: synthetic peptide directed towards the N terminal of human RNF10. Synthetic peptide located within the following region: PPRSASAGPAGESKPKSDGKNSSGSKRYNRKRELSYPKNESFNNQSRRSS
Formulation:	Liquid. Purified antibody supplied in 1x PBS buffer with 0.09% (w/v) sodium azide and 2% sucrose. <i>Note that this product is shipped as lyophilized powder to China customers.</i>
Purification:	Affinity Purified
Conjugation:	Unconjugated
Storage:	Store at -20°C as received.
Stability:	Stable for 12 months from date of receipt.
Predicted Protein Size:	90 kDa
Gene Name:	ring finger protein 10
Database Link:	<a href="#">NP_055683</a> <a href="#">Entrez Gene 9921 Human</a> <a href="#">Q8N5U6</a>



[View online »](#)

**Background:**

RNF10 contains a ring finger motif, which is known to be involved in protein-protein interactions. The specific function of this protein has not yet been determined. EST data suggests the existence of multiple alternatively spliced transcript variants, however, their full length nature is not known. The protein encoded by this gene contains a ring finger motif, which is known to be involved in protein-protein interactions. The specific function of this protein has not yet been determined. EST data suggests the existence of multiple alternatively spliced transcript variants, however, their full length nature is not known.

**Synonyms:**

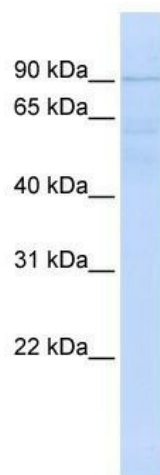
RIE2

**Note:**

Immunogen Sequence Homology: Dog: 100%; Rat: 100%; Horse: 100%; Human: 100%; Mouse: 100%; Bovine: 100%; Pig: 92%; Guinea pig: 92%

**Protein Families:**

Druggable Genome

**Product images:**

WB Suggested Anti-RNF10 Antibody Titration: 0.2-1 ug/ml; ELISA Titer: 1:500; Positive Control: HeLa cell lysate RNF10 is strongly supported by BioGPS gene expression data to be expressed in Human HeLa cells