

Product datasheet for **TA335610**

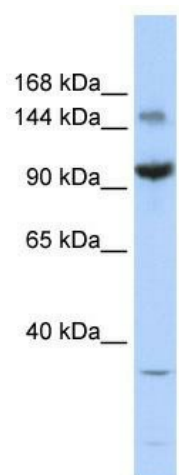
ZBTB40 Rabbit Polyclonal Antibody

Product data:

Product Type:	Primary Antibodies
Applications:	WB
Recommended Dilution:	WB
Reactivity:	Human
Host:	Rabbit
Isotype:	IgG
Clonality:	Polyclonal
Immunogen:	The immunogen for Anti-ZBTB40 Antibody: synthetic peptide directed towards the middle region of human ZBTB40. Synthetic peptide located within the following region: FPGALQHHVTTEHFQSETTFPCELCGELFTSQAQLDSHLESEHPKVMST
Formulation:	Liquid. Purified antibody supplied in 1x PBS buffer with 0.09% (w/v) sodium azide and 2% sucrose. <i>Note that this product is shipped as lyophilized powder to China customers.</i>
Purification:	Affinity Purified
Conjugation:	Unconjugated
Storage:	Store at -20°C as received.
Stability:	Stable for 12 months from date of receipt.
Predicted Protein Size:	138 kDa
Gene Name:	zinc finger and BTB domain containing 40
Database Link:	NP_055685 Entrez Gene 9923 Human Q9NUA8
Background:	ZBTB40 may be involved in transcriptional regulation.
Synonyms:	ZNF923
Note:	Immunogen Sequence Homology: Human: 100%; Mouse: 100%; Dog: 93%; Pig: 93%; Rat: 93%; Horse: 93%; Bovine: 93%; Guinea pig: 93%; Rabbit: 86%
Protein Families:	Transcription Factors



[View online »](#)

Product images:

WB Suggested Anti-ZBTB40 Antibody Titration:
0.2-1 ug/ml; ELISA Titer: 1:12500; Positive Control:
721_B cell lysate ZBTB40 is strongly supported by
BioGPS gene expression data to be expressed in
Human 721_B cells