

Product datasheet for **TA335609**

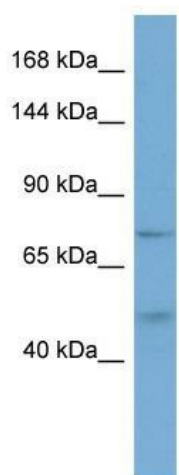
FAM13A Rabbit Polyclonal Antibody

Product data:

Product Type:	Primary Antibodies
Applications:	WB
Recommended Dilution:	WB
Reactivity:	Human
Host:	Rabbit
Isotype:	IgG
Clonality:	Polyclonal
Immunogen:	The immunogen for Anti-FAM13A Antibody is: synthetic peptide directed towards the C-terminal region of Human FAM13A. Synthetic peptide located within the following region: DFEDNFFRQNGRNVQKEDRTPMAEEYSEYKHIKAKLRLLEVLISKRDTS
Formulation:	Liquid. Purified antibody supplied in 1x PBS buffer with 0.09% (w/v) sodium azide and 2% sucrose. <i>Note that this product is shipped as lyophilized powder to China customers.</i>
Purification:	Affinity Purified
Conjugation:	Unconjugated
Storage:	Store at -20°C as received.
Stability:	Stable for 12 months from date of receipt.
Predicted Protein Size:	75 kDa
Gene Name:	family with sequence similarity 13 member A
Database Link:	NP_055698 Entrez Gene 10144 Human O94988
Background:	The function of this protein remains unknown.
Synonyms:	ARHGAP48; FAM13A1
Note:	Immunogen Sequence Homology: Dog: 100%; Pig: 100%; Rat: 100%; Horse: 100%; Human: 100%; Mouse: 100%; Bovine: 100%; Rabbit: 100%; Guinea pig: 100%; Zebrafish: 92%



[View online »](#)

Product images:

Host: Rabbit; Target Name: FAM13A; Sample
Tissue: OVCAR-3 Whole Cell lysates; Antibody
Dilution: 1.0 ug/ml