

## Product datasheet for **TA335607**

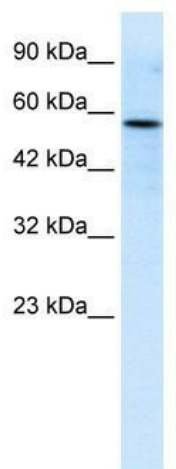
### **RIPX (RUFY3) Rabbit Polyclonal Antibody**

#### **Product data:**

<b>Product Type:</b>	Primary Antibodies
<b>Applications:</b>	WB
<b>Recommended Dilution:</b>	WB
<b>Reactivity:</b>	Human
<b>Host:</b>	Rabbit
<b>Isotype:</b>	IgG
<b>Clonality:</b>	Polyclonal
<b>Immunogen:</b>	The immunogen for Anti-RIPX Antibody: synthetic peptide directed towards the C terminal of human RIPX. Synthetic peptide located within the following region: SSDLGVKQKSELNSRLEEKTNQMAATIKQLEQSEKDLVKQAKTLNSAANK
<b>Formulation:</b>	Liquid. Purified antibody supplied in 1x PBS buffer with 0.09% (w/v) sodium azide and 2% sucrose.
<b>Purification:</b>	Affinity Purified
<b>Conjugation:</b>	Unconjugated
<b>Storage:</b>	Store at -20°C as received.
<b>Stability:</b>	Stable for 12 months from date of receipt.
<b>Predicted Protein Size:</b>	53 kDa
<b>Gene Name:</b>	RUN and FYVE domain containing 3
<b>Database Link:</b>	<a href="#">NP_055776</a> <a href="#">Entrez Gene 22902 Human</a> <a href="#">Q7L099</a>
<b>Background:</b>	Located on chromosome 4, the RIPX encodes a protein with unknown function.
<b>Synonyms:</b>	RIPX; SINGAR1; ZFYVE30
<b>Note:</b>	Immunogen Sequence Homology: Dog: 100%; Pig: 100%; Rat: 100%; Horse: 100%; Human: 100%; Mouse: 100%; Bovine: 100%; Rabbit: 100%; Guinea pig: 93%



[View online »](#)

**Product images:**

WB Suggested Anti-RIPX Antibody Titration: 0.2-1 ug/ml; ELISA Titer: 1:62500; Positive Control: Jurkat cell lysate RUFY3 is strongly supported by BioGPS gene expression data to be expressed in Human Jurkat cells