

Product datasheet for **TA335606**

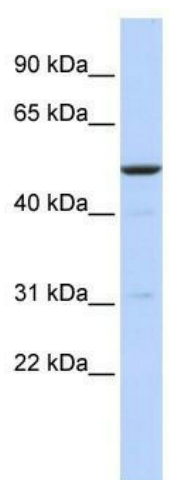
BTBD3 Rabbit Polyclonal Antibody

Product data:

Product Type:	Primary Antibodies
Applications:	WB
Recommended Dilution:	WB
Reactivity:	Human
Host:	Rabbit
Isotype:	IgG
Clonality:	Polyclonal
Immunogen:	The immunogen for Anti-BTBD3 Antibody: synthetic peptide directed towards the N terminal of human BTBD3. Synthetic peptide located within the following region: VDDKEKNMKCLTFFLMLPETVKNRSKSSKKANTSSSSSNSSKLPPVCYE
Formulation:	Liquid. Purified antibody supplied in 1x PBS buffer with 0.09% (w/v) sodium azide and 2% sucrose.
Purification:	Affinity Purified
Conjugation:	Unconjugated
Storage:	Store at -20°C as received.
Stability:	Stable for 12 months from date of receipt.
Predicted Protein Size:	58 kDa
Gene Name:	BTB domain containing 3
Database Link:	NP_055777 Entrez Gene 22903 Human Q9Y2F9
Background:	The exact function of BTBD3 remains unknown.
Synonyms:	dj742j24.1
Note:	Immunogen Sequence Homology: Pig: 100%; Human: 100%; Rat: 86%; Mouse: 86%; Bovine: 86%; Guinea pig: 86%



[View online »](#)

Product images:


WB Suggested Anti-BTBD3 Antibody Titration:
0.2-1 ug/ml; ELISA Titer: 1:312500; Positive
Control: MCF7 cell lysate