

Product datasheet for **TA335605**

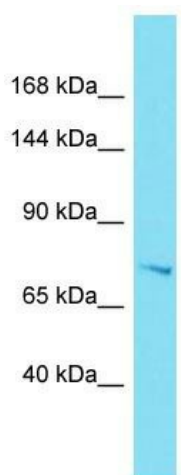
EFR3B Rabbit Polyclonal Antibody

Product data:

Product Type:	Primary Antibodies
Applications:	WB
Recommended Dilution:	WB
Reactivity:	Human
Host:	Rabbit
Isotype:	IgG
Clonality:	Polyclonal
Immunogen:	The immunogen for Anti-EFR3B Antibody is: synthetic peptide directed towards the N-terminal region of Human EFR3B. Synthetic peptide located within the following region: VPSLLFNLQHVVEEAESRSPSPQLQAPEKEKESPAELAERCLRELLGRAAFG
Formulation:	Liquid. Purified antibody supplied in 1x PBS buffer with 0.09% (w/v) sodium azide and 2% sucrose.
Purification:	Affinity Purified
Conjugation:	Unconjugated
Storage:	Store at -20°C as received.
Stability:	Stable for 12 months from date of receipt.
Predicted Protein Size:	73 kDa
Gene Name:	EFR3 homolog B
Database Link:	NP_055786 Entrez Gene 22979 Human Q9Y2G0
Background:	The function of this protein remains unknown.
Synonyms:	KIAA0953
Note:	Immunogen Sequence Homology: Human: 100%; Dog: 93%; Pig: 93%; Rat: 93%; Horse: 93%; Mouse: 93%; Bovine: 93%; Rabbit: 93%; Zebrafish: 93%; Guinea pig: 93%



[View online »](#)

Product images:


Host: Rabbit

Target Name: EFR3B

Sample Tissue: A549 Cell Lysate

Antibody Dilution: 1.0 µg/ml

Host: Rabbit; Target Name: EFR3B; Sample Tissue: A549 Whole Cell lysates; Antibody Dilution: 1.0 ug/ml. EFR3B is strongly supported by BioGPS gene expression data to be expressed in Human A549 cells