

Product datasheet for **TA335602**

TMCC1 Rabbit Polyclonal Antibody

Product data:

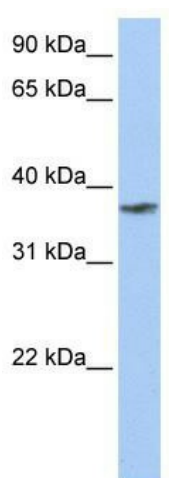
Product Type:	Primary Antibodies
Applications:	WB
Recommended Dilution:	WB
Reactivity:	Human
Host:	Rabbit
Isotype:	IgG
Clonality:	Polyclonal
Immunogen:	The immunogen for Anti-TMCC1 Antibody: synthetic peptide directed towards the C terminal of human TMCC1. Synthetic peptide located within the following region: ERLEEQLNDLTELHQNEILNLKQELASMEEKIAYQSYERARDIQEAL EAC
Formulation:	Liquid. Purified antibody supplied in 1x PBS buffer with 0.09% (w/v) sodium azide and 2% sucrose. <i>Note that this product is shipped as lyophilized powder to China customers.</i>
Purification:	Affinity Purified
Conjugation:	Unconjugated
Storage:	Store at -20°C as received.
Stability:	Stable for 12 months from date of receipt.
Predicted Protein Size:	36 kDa
Gene Name:	transmembrane and coiled-coil domain family 1
Database Link:	NP_055823 Entrez Gene 23023 Human O94876
Background:	TMCC1 is a multi-pass membrane protein. It belongs to the TEX28 family. The exact function of TMCC1 remains unknown.
Synonyms:	DKFZp686M0169; FLJ42680; transmembrane and coiled-coil domain family 1; transmembrane and coiled-coil domains 1
Note:	Immunogen Sequence Homology: Dog: 100%; Pig: 100%; Rat: 100%; Horse: 100%; Human: 100%; Mouse: 100%; Bovine: 100%; Rabbit: 100%; Zebrafish: 100%; Guinea pig: 100%



[View online »](#)

Protein Families: Transmembrane

Product images:



WB Suggested Anti-TMCC1 Antibody Titration:
0.2-1 ug/ml; Positive Control: Human Muscle