

## Product datasheet for TA335601

### EFR3A Rabbit Polyclonal Antibody

#### Product data:

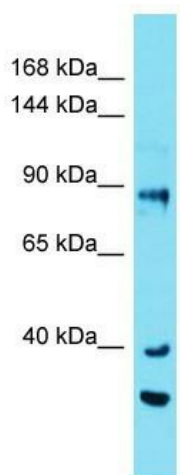
<b>Product Type:</b>	Primary Antibodies
<b>Applications:</b>	WB
<b>Recommended Dilution:</b>	WB
<b>Reactivity:</b>	Human
<b>Host:</b>	Rabbit
<b>Isotype:</b>	IgG
<b>Clonality:</b>	Polyclonal
<b>Immunogen:</b>	The immunogen for Anti-EFR3A Antibody is: synthetic peptide directed towards the C-terminal region of Human EFR3A. Synthetic peptide located within the following region: DTSGMEEQEKEKRRLLVIEKFQKAPFEEIAAQCESKANLLHDLRLAQILELT
<b>Formulation:</b>	Liquid. Purified antibody supplied in 1x PBS buffer with 0.09% (w/v) sodium azide and 2% sucrose.
<b>Purification:</b>	Affinity Purified
<b>Conjugation:</b>	Unconjugated
<b>Storage:</b>	Store at -20°C as received.
<b>Stability:</b>	Stable for 12 months from date of receipt.
<b>Predicted Protein Size:</b>	85 kDa
<b>Gene Name:</b>	EFR3 homolog A
<b>Database Link:</b>	<a href="#">NP_055952</a> <a href="#">Entrez Gene 23167 Human</a> <a href="#">Q14156</a>
<b>Background:</b>	This gene encodes a membrane protein. Studies with orthologous gene in mouse show that it is differentially expressed in the auditory brainstem neurons of mice with hearing deficit, compared to mice with normal hearing ability, suggesting a role for this gene in hearing.



**Synonyms:** DKFZp781J0562; KIAA0143

**Note:** Immunogen Sequence Homology: Dog: 100%; Horse: 100%; Human: 100%; Bovine: 100%; Rabbit: 100%; Rat: 93%; Mouse: 93%; Pig: 86%; Guinea pig: 86%

**Product images:**



Host: Rabbit

Target Name: EFR3A

Sample Tissue: COLO205 Cell Lysate

Antibody Dilution: 1.0 µg/ml

Host: Rabbit; Target Name: EFR3A; Sample Tissue: COLO205 Whole Cell lysates; Antibody Dilution: 1.0 µg/ml. EFR3A is strongly supported by BioGPS gene expression data to be expressed in Human COLO205 cells