

Product datasheet for **TA335599**

LARP1 Rabbit Polyclonal Antibody

Product data:

Product Type:	Primary Antibodies
Applications:	IHC, WB
Recommended Dilution:	WB, IHC
Reactivity:	Human
Host:	Rabbit
Isotype:	IgG
Clonality:	Polyclonal
Immunogen:	The immunogen for Anti-LARP2 Antibody: synthetic peptide directed towards the middle region of human LARP2. Synthetic peptide located within the following region: RNTRTPRTPRTPQLKDSSQTSRFYPVVKEGRTLDAKMPRKRKTRHSSNPP
Formulation:	Liquid. Purified antibody supplied in 1x PBS buffer with 0.09% (w/v) sodium azide and 2% sucrose. <i>Note that this product is shipped as lyophilized powder to China customers.</i>
Purification:	Protein A purified
Conjugation:	Unconjugated
Storage:	Store at -20°C as received.
Stability:	Stable for 12 months from date of receipt.
Predicted Protein Size:	116 kDa
Gene Name:	La ribonucleoprotein domain family member 1
Database Link:	NP_056130 Entrez Gene 23367 Human Q6PKG0
Background:	LARP2 encodes a protein containing domains found in the La related protein of Drosophila melanogaster. La motif-containing proteins are thought to be RNA-binding proteins, where the La motif and adjacent amino acids fold into an RNA recognition motif. The La motif is also found in proteins unrelated to the La protein. Alternative splicing has been observed at this locus and three variants, encoding distinct isoforms, are described.
Synonyms:	LARP



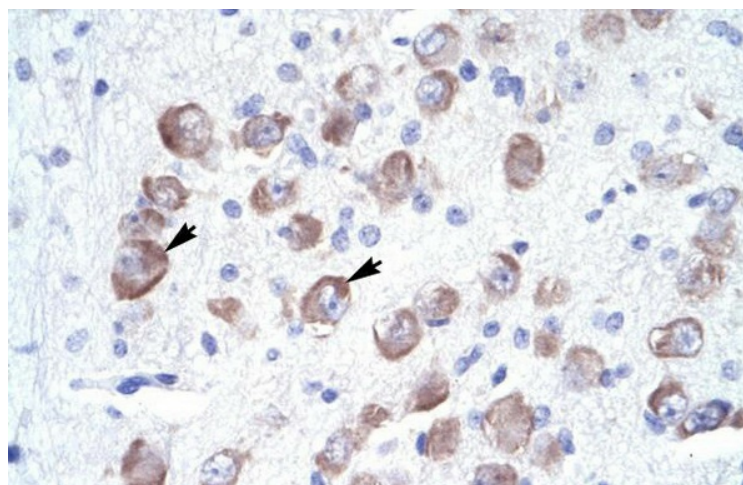
[View online »](#)

Note: Immunogen Sequence Homology: Dog: 100%; Pig: 100%; Rat: 100%; Horse: 100%; Human: 100%; Bovine: 100%; Rabbit: 100%; Guinea pig: 100%; Mouse: 93%; Zebrafish: 79%

Product images:



WB Suggested Anti-LARP2 Antibody Titration: 5.0 ug/ml; ELISA Titer: 1:62500; Positive Control: HepG2 cell lysate. LARP1 is strongly supported by BioGPS gene expression data to be expressed in Human HepG2 cells



Human Brain