

Product datasheet for **TA335598**

FEM 1B (FEM1B) Rabbit Polyclonal Antibody

Product data:

| | |
|-------------------------|--|
| Product Type: | Primary Antibodies |
| Applications: | WB |
| Recommended Dilution: | WB |
| Reactivity: | Human |
| Host: | Rabbit |
| Isotype: | IgG |
| Clonality: | Polyclonal |
| Immunogen: | The immunogen for Anti-FEM1B Antibody: synthetic peptide directed towards the C terminal of human FEM1B. Synthetic peptide located within the following region: DKSTTGVS EILLKTQMKMSLKCLAARAVRANDINYQDQIPRTL EEFVGFH |
| Formulation: | Liquid. Purified antibody supplied in 1x PBS buffer with 0.09% (w/v) sodium azide and 2% sucrose. <i>Note that this product is shipped as lyophilized powder to China customers.</i> |
| Purification: | Affinity Purified |
| Conjugation: | Unconjugated |
| Storage: | Store at -20°C as received. |
| Stability: | Stable for 12 months from date of receipt. |
| Predicted Protein Size: | 69 kDa |
| Gene Name: | fem-1 homolog B |
| Database Link: | NP_056137 Entrez Gene 10116 Human Q9UK73 |
| Background: | FEM1B is a component of an E3 ubiquitin-protein ligase complex, in which it may act as a substrate recognition subunit. It involved in apoptosis by acting as a death receptor-associated protein that mediates apoptosis. FEM1B also involved in glucose homeostasis in pancreatic islet. |
| Synonyms: | F1A-ALPHA; F1AA; FEM1-beta |

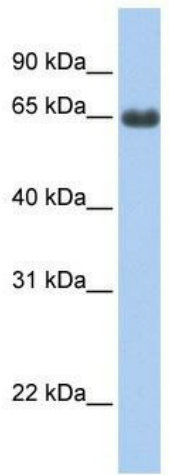


[View online »](#)

Note: Immunogen Sequence Homology: Dog: 100%; Pig: 100%; Rat: 100%; Horse: 100%; Human: 100%; Mouse: 100%; Bovine: 100%; Rabbit: 100%; Guinea pig: 100%

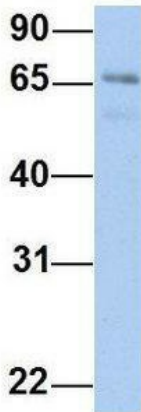
Protein Families: Druggable Genome

Product images:



WB Suggested Anti-FEM1B Antibody Titration: 0.2-1 ug/ml; Positive Control: Human Lung

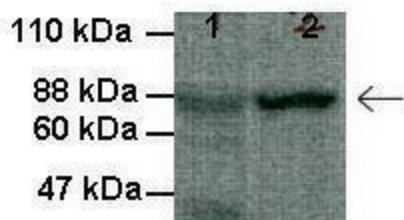
FEM1B



Rabbit Anti-FEM1B
 Sample Type: Human Fetal Heart
 Antibody Concentration: 1ug/mL

Host: Rabbit; Target Name: FEM1B; Sample Tissue: Human Fetal Heart; Antibody Dilution: 1.0 ug/ml

FEM1B



Lanes: 1: 30ug HEK293T cell lysate, 2: 30ug 3FLAG-hFEM1B transfected HEK293T cell lysate; Primary Antibody Dilution: 1: 1000; Secondary Antibody Dilution: 1: 8000; Gene Name: FEM1B; Submitted by: Anonymous; FEM1B is strongly supported by BioGPS gene expression data to be expressed in Human HEK293T cells