

Product datasheet for **TA335597**

FEM 1B (FEM1B) Rabbit Polyclonal Antibody

Product data:

Product Type:	Primary Antibodies
Applications:	WB
Recommended Dilution:	WB
Reactivity:	Human
Host:	Rabbit
Isotype:	IgG
Clonality:	Polyclonal
Immunogen:	The immunogen for Anti-FEM1B Antibody: synthetic peptide directed towards the middle region of human FEM1B. Synthetic peptide located within the following region: FQDGDNILEKEVLPPIHAYGNRTECRNPQELESIRQDRDALHMEGLIVRE
Formulation:	Liquid. Purified antibody supplied in 1x PBS buffer with 0.09% (w/v) sodium azide and 2% sucrose. <i>Note that this product is shipped as lyophilized powder to China customers.</i>
Purification:	Affinity Purified
Conjugation:	Unconjugated
Storage:	Store at -20°C as received.
Stability:	Stable for 12 months from date of receipt.
Predicted Protein Size:	69 kDa
Gene Name:	fem-1 homolog B
Database Link:	NP_056137 Entrez Gene 10116 Human Q9UK73
Background:	FEM1B is a component of an E3 ubiquitin-protein ligase complex, in which it may act as a substrate recognition subunit. It involved in apoptosis by acting as a death receptor-associated protein that mediates apoptosis. FEM1B also involved in glucose homeostasis in pancreatic islet.
Synonyms:	F1A-ALPHA; F1AA; FEM1-beta

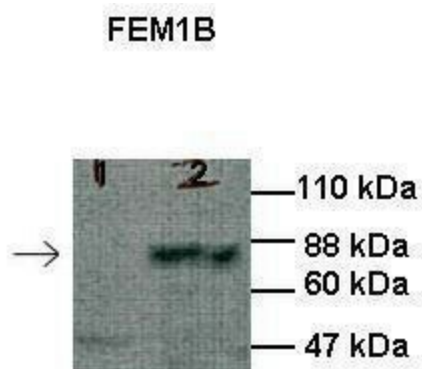


[View online »](#)

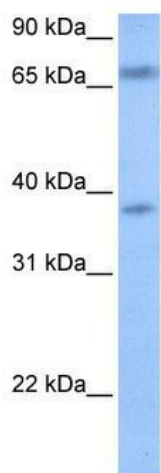
Note: Immunogen Sequence Homology: Dog: 100%; Pig: 100%; Rat: 100%; Horse: 100%; Human: 100%; Bovine: 100%; Guinea pig: 100%; Mouse: 93%; Rabbit: 93%

Protein Families: Druggable Genome

Product images:



Lanes: 1: 30ug HEK293T cell lysate, 2: 30ug 3FLAG-hFEM1B transfected HEK293T cell lysate; Primary Antibody Dilution: 1: 1000; Secondary Antibody: Anti-rabbit HRP; Secondary Antibody Dilution: 1: 8000; Gene Name: FEM1B; Submitted by: Anonymous; FEM1B is strongly supported by BioGPS gene expression data to be expressed in HEK293T



WB Suggested Anti-FEM1B Antibody Titration: 0.2-1 ug/ml; Positive Control: 721_B cell lysate. FEM1B is strongly supported by BioGPS gene expression data to be expressed in Human 721_B cells