

## Product datasheet for **TA335596**

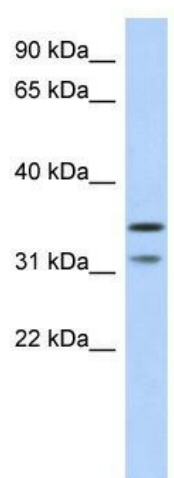
### **C17orf81 (ELP5) Rabbit Polyclonal Antibody**

#### **Product data:**

<b>Product Type:</b>	Primary Antibodies
<b>Applications:</b>	WB
<b>Recommended Dilution:</b>	WB
<b>Reactivity:</b>	Human
<b>Host:</b>	Rabbit
<b>Isotype:</b>	IgG
<b>Clonality:</b>	Polyclonal
<b>Immunogen:</b>	The immunogen for Anti-ELP5 Antibody: synthetic peptide directed towards the middle region of human ELP5. Synthetic peptide located within the following region: HAVSHQDSCPGDSSSVGKVSVLGLLHEELHGPGPVGALSSLAQTEVTLGG
<b>Formulation:</b>	Liquid. Purified antibody supplied in 1x PBS buffer with 0.09% (w/v) sodium azide and 2% sucrose.
<b>Purification:</b>	Affinity Purified
<b>Conjugation:</b>	Unconjugated
<b>Storage:</b>	Store at -20°C as received.
<b>Stability:</b>	Stable for 12 months from date of receipt.
<b>Predicted Protein Size:</b>	35 kDa
<b>Gene Name:</b>	elongator acetyltransferase complex subunit 5
<b>Database Link:</b>	<a href="#">NP_056177</a> <a href="#">Entrez Gene 23587 Human</a> <a href="#">Q8TE02</a>
<b>Background:</b>	The specific function of ELP5 is not yet known.
<b>Synonyms:</b>	C17orf81; DERP6; HSPC002; MST071; MSTP071
<b>Note:</b>	Immunogen Sequence Homology: Horse: 100%; Human: 100%; Rabbit: 100%; Pig: 93%; Rat: 93%; Bovine: 93%; Dog: 86%; Mouse: 85%



[View online »](#)

**Product images:**

WB Suggested Anti-ELP5 Antibody Titration: 0.2-1 ug/ml; ELISA Titer: 1: 1562500; Positive Control: Human Pancreas