

## Product datasheet for **TA335593**

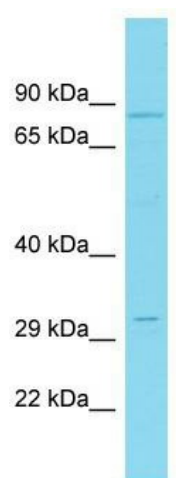
### CNOT10 Rabbit Polyclonal Antibody

#### Product data:

Product Type:	Primary Antibodies
Applications:	WB
Recommended Dilution:	WB
Reactivity:	Human
Host:	Rabbit
Isotype:	IgG
Clonality:	Polyclonal
Immunogen:	The immunogen for Anti-CNOT10 Antibody is: synthetic peptide directed towards the C-terminal region of Human CNOT10. Synthetic peptide located within the following region: NVTDVSLGISSNEQDQGSDDKGENEAMESSGKRAPQCYSSVNSARTVMLF
Formulation:	Liquid. Purified antibody supplied in 1x PBS buffer with 0.09% (w/v) sodium azide and 2% sucrose. <i>Note that this product is shipped as lyophilized powder to China customers.</i>
Purification:	Affinity Purified
Conjugation:	Unconjugated
Storage:	Store at -20°C as received.
Stability:	Stable for 12 months from date of receipt.
Predicted Protein Size:	79 kDa
Gene Name:	CCR4-NOT transcription complex subunit 10
Database Link:	<a href="#">NP_056257</a> <a href="#">Entrez Gene 25904 Human</a> <a href="#">Q9H9A5</a>
Background:	The function of this protein remains unknown.
Synonyms:	DKFZp434K115; FLJ12890; FLJ13165
Note:	Immunogen Sequence Homology: Dog: 100%; Pig: 100%; Rat: 100%; Horse: 100%; Human: 100%; Mouse: 100%; Bovine: 100%; Rabbit: 100%; Guinea pig: 100%; Zebrafish: 79%
Protein Pathways:	RNA degradation



[View online »](#)

**Product images:**

Host: Rabbit; Target Name: CNOT10; Sample  
Tissue: PANC1 Whole Cell lysates; Antibody  
Dilution: 1.0 ug/ml