

## Product datasheet for **TA335591**

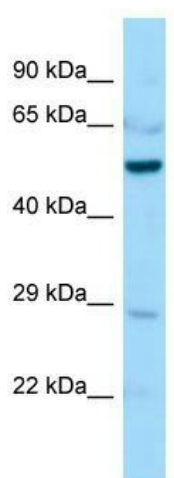
### CRELD1 Rabbit Polyclonal Antibody

#### Product data:

Product Type:	Primary Antibodies
Applications:	WB
Recommended Dilution:	WB
Reactivity:	Mouse
Host:	Rabbit
Isotype:	IgG
Clonality:	Polyclonal
Immunogen:	The immunogen for Anti-Creld1 Antibody is: synthetic peptide directed towards the middle region of Mouse Creld1. Synthetic peptide located within the following region: ACGQCGLGYFEARNSSHLVCSACFGPCARCTGPEESHCLQCKKGWALHH
Formulation:	Liquid. Purified antibody supplied in 1x PBS buffer with 0.09% (w/v) sodium azide and 2% sucrose. <i>Note that this product is shipped as lyophilized powder to China customers.</i>
Purification:	Affinity Purified
Conjugation:	Unconjugated
Storage:	Store at -20°C as received.
Stability:	Stable for 12 months from date of receipt.
Predicted Protein Size:	46 kDa
Gene Name:	cysteine rich with EGF like domains 1
Database Link:	<a href="#">NP_056328</a> <a href="#">Entrez Gene 171508 Mouse</a> <a href="#">Q96HD1</a>
Background:	The function of this protein remains unknown.
Synonyms:	AVSD2; CIRPIN
Note:	Immunogen Sequence Homology: Dog: 100%; Horse: 100%; Human: 100%; Bovine: 100%; Pig: 93%; Rat: 93%; Mouse: 93%; Guinea pig: 93%
Protein Families:	Transmembrane



[View online »](#)

**Product images:**

Host: Rabbit; Target Name: Creld1; Sample  
Tissue: Mouse Lung lysates; Antibody Dilution:  
1.0 ug/ml