

## Product datasheet for **TA335588**

### **SAMD4A Rabbit Polyclonal Antibody**

#### **Product data:**

<b>Product Type:</b>	Primary Antibodies
<b>Applications:</b>	WB
<b>Recommended Dilution:</b>	WB
<b>Reactivity:</b>	Human
<b>Host:</b>	Rabbit
<b>Isotype:</b>	IgG
<b>Clonality:</b>	Polyclonal
<b>Immunogen:</b>	The immunogen for Anti-SAMD4A Antibody: synthetic peptide directed towards the middle region of human SAMD4A. Synthetic peptide located within the following region: LKSLRLHKYAALFSQMTYEEMMALTECQLEAQNVTKGARHKIVISIQKLK
<b>Formulation:</b>	Liquid. Purified antibody supplied in 1x PBS buffer with 0.09% (w/v) sodium azide and 2% sucrose.
<b>Purification:</b>	Affinity Purified
<b>Conjugation:</b>	Unconjugated
<b>Storage:</b>	Store at -20°C as received.
<b>Stability:</b>	Stable for 12 months from date of receipt.
<b>Predicted Protein Size:</b>	79 kDa
<b>Gene Name:</b>	sterile alpha motif domain containing 4A
<b>Database Link:</b>	<a href="#">NP_056404</a> <a href="#">Entrez Gene 23034 Human</a> <a href="#">Q9UPU9</a>
<b>Background:</b>	Sterile alpha motifs (SAMs) in proteins such as SAMD4A are part of an RNA-binding domain that functions as a posttranscriptional regulator by binding to an RNA sequence motif known as the Smaug recognition element, which was named after the Drosophila Smaug protein. Sterile alpha motifs (SAMs) in proteins such as SAMD4A are part of an RNA-binding domain that functions as a posttranscriptional regulator by binding to an RNA sequence motif known as the Smaug recognition element, which was named after the Drosophila Smaug protein (Baez and Boccaccio, 2005 [PubMed 16221671]). [supplied by OMIM]



[View online »](#)

**Synonyms:** SAMD4; SMAUG; SMAUG1; SMG; SMGA

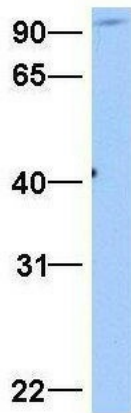
**Note:** Immunogen Sequence Homology: Dog: 100%; Pig: 100%; Rat: 100%; Horse: 100%; Human: 100%; Mouse: 100%; Bovine: 100%; Rabbit: 100%; Guinea pig: 100%; Zebrafish: 92%

**Product images:**



WB Suggested Anti-SAMD4A Antibody Titration: 0.2-1 ug/ml; Positive Control: Human Liver

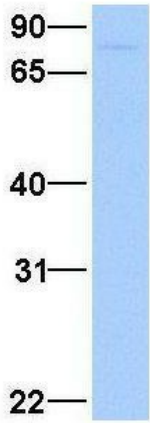
**SAMD4A**



Rabbit Anti-SAMD4A  
Sample Type: Human Fetal Brain  
Antibody Concentration: 1ug/mL

Host: Rabbit; Target Name: SAMD4A; Sample Tissue: Human Fetal Brain; Antibody Dilution: 1.0 ug/ml

# SAMD4A



Rabbit Anti-SAMD4A  
Sample Type: Human Fetal Liver  
Antibody Concentration: 1ug/mL

Host: Rabbit; Target Name: SAMD4A; Sample  
Tissue: Human Fetal Liver; Antibody Dilution: 1.0  
ug/ml