

Product datasheet for **TA335586**

GIMAP2 Rabbit Polyclonal Antibody

Product data:

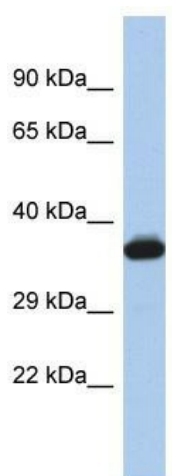
Product Type:	Primary Antibodies
Applications:	WB
Recommended Dilution:	WB
Reactivity:	Human
Host:	Rabbit
Isotype:	IgG
Clonality:	Polyclonal
Immunogen:	The immunogen for Anti-GIMAP2 Antibody is: synthetic peptide directed towards the middle region of Human GIMAP2. Synthetic peptide located within the following region: LVTQLGRYTSQDQQAQRVKEIFGEDAMGHTIVLFTHKEDLNGGSLMDYM
Formulation:	Liquid. Purified antibody supplied in 1x PBS buffer with 0.09% (w/v) sodium azide and 2% sucrose. <i>Note that this product is shipped as lyophilized powder to China customers.</i>
Purification:	Affinity Purified
Conjugation:	Unconjugated
Storage:	Store at -20°C as received.
Stability:	Stable for 12 months from date of receipt.
Predicted Protein Size:	37 kDa
Gene Name:	GTPase, IMAP family member 2
Database Link:	NP_056475 Entrez Gene 26157 Human Q9UG22
Background:	This gene encodes a protein belonging to the GTP-binding superfamily and to the immuno-associated nucleotide (IAN) subfamily of nucleotide-binding proteins. In humans, the IAN subfamily genes are located in a cluster at 7q36.1.
Synonyms:	HIMAP2; IAN12; IMAP2
Note:	Immunogen Sequence Homology: Human: 100%; Horse: 93%; Bovine: 93%; Mouse: 91%; Rabbit: 91%; Dog: 86%; Pig: 86%; Rat: 85%; Zebrafish: 82%; Guinea pig: 79%



[View online »](#)

Protein Families: Transmembrane

Product images:



Host: Rabbit; Target Name: GIMAP2; Sample
Tissue: Jurkat Whole cell lysates; Antibody
Dilution: 1.0 ug/ml