

## Product datasheet for **TA335585**

### C2orf24 (CNPPD1) Rabbit Polyclonal Antibody

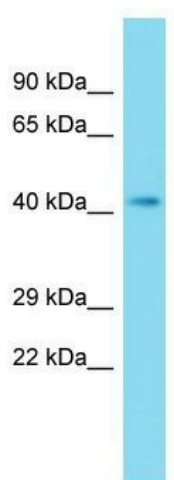
#### Product data:

Product Type:	Primary Antibodies
Applications:	WB
Recommended Dilution:	WB
Reactivity:	Human
Host:	Rabbit
Isotype:	IgG
Clonality:	Polyclonal
Immunogen:	The immunogen for Anti-CNPPD1 Antibody is: synthetic peptide directed towards the N-terminal region of Human CNPPD1. Synthetic peptide located within the following region: ISPCAMMLALVYIERLRHRNPDYLQHVSSDLFLISMMVASKYLYDEGEE
Formulation:	Liquid. Purified antibody supplied in 1x PBS buffer with 0.09% (w/v) sodium azide and 2% sucrose.
Purification:	Affinity Purified
Conjugation:	Unconjugated
Storage:	Store at -20°C as received.
Stability:	Stable for 12 months from date of receipt.
Predicted Protein Size:	45 kDa
Gene Name:	cyclin Pas1/PHO80 domain containing 1
Database Link:	<a href="#">NP_056495</a> <a href="#">Entrez Gene 27013 Human</a> <a href="#">Q9BV87</a>
Background:	The function of this protein remains unknown.
Synonyms:	C2orf24; CGI-57
Note:	Immunogen Sequence Homology: Pig: 100%; Rat: 100%; Horse: 100%; Human: 100%; Mouse: 100%; Bovine: 100%; Rabbit: 100%; Guinea pig: 100%; Dog: 93%; Zebrafish: 79%



[View online »](#)

Product images:



Host: Rabbit; Target Name: CNPPD1; Sample  
Tissue: Fetal Liver lysates; Antibody Dilution: 1.0  
ug/ml