

Product datasheet for **TA335584**

NALF2 Rabbit Polyclonal Antibody

Product data:

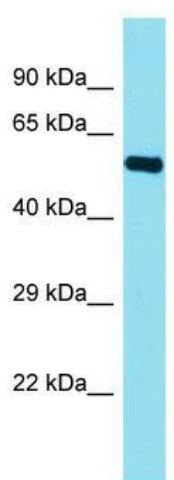
Product Type:	Primary Antibodies
Applications:	WB
Recommended Dilution:	WB
Reactivity:	Human
Host:	Rabbit
Isotype:	IgG
Clonality:	Polyclonal
Immunogen:	The immunogen for Anti-FAM155B Antibody is: synthetic peptide directed towards the C-terminal region of Human FAM155B. Synthetic peptide located within the following region: CIEAYQRLDRHAQEKYDEFDLVLHKYLQAEYSIRSCTKGCKAVYKAWLC
Formulation:	Liquid. Purified antibody supplied in 1x PBS buffer with 0.09% (w/v) sodium azide and 2% sucrose. <i>Note that this product is shipped as lyophilized powder to China customers.</i>
Purification:	Affinity Purified
Conjugation:	Unconjugated
Storage:	Store at -20°C as received.
Stability:	Stable for 12 months from date of receipt.
Predicted Protein Size:	52 kDa
Gene Name:	family with sequence similarity 155 member B
Database Link:	NP_056501 Entrez Gene 27112 Human O75949
Background:	This gene encodes a product belonging to a family of proteins with unknown function. The presence of two transmembrane domains suggests that this protein is a multi-pass membrane protein.
Synonyms:	bB57D9.1; CXorf63; TED; TMEM28
Note:	Immunogen Sequence Homology: Dog: 100%; Pig: 100%; Rat: 100%; Horse: 100%; Human: 100%; Mouse: 100%; Bovine: 100%; Rabbit: 100%; Guinea pig: 100%; Zebrafish: 85%



[View online »](#)

Protein Families: Druggable Genome

Product images:



Host: Rabbit; Target Name: FAM155B; Sample
Tissue: 293T Whole Cell lysates; Antibody
Dilution: 1.0 ug/ml