

Product datasheet for **TA335582**

DENND2A Rabbit Polyclonal Antibody

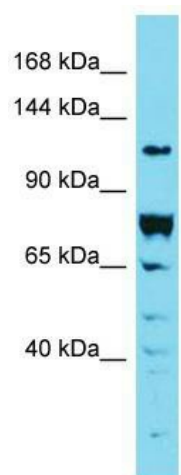
Product data:

Product Type:	Primary Antibodies
Applications:	WB
Recommended Dilution:	WB
Reactivity:	Human
Host:	Rabbit
Isotype:	IgG
Clonality:	Polyclonal
Immunogen:	The immunogen for Anti-DENND2A Antibody is: synthetic peptide directed towards the N-terminal region of Human DENND2A. Synthetic peptide located within the following region: DRSLENVYRGSEGSPTKPFINPLPKPRRTFKHAGEGDKDGKPGIGFRKEK
Formulation:	Liquid. Purified antibody supplied in 1x PBS buffer with 0.09% (w/v) sodium azide and 2% sucrose.
Purification:	Affinity Purified
Conjugation:	Unconjugated
Storage:	Store at -20°C as received.
Stability:	Stable for 12 months from date of receipt.
Predicted Protein Size:	113 kDa
Gene Name:	DENN domain containing 2A
Database Link:	NP_056504 Entrez Gene 27147 Human Q9ULE3
Background:	DENND2A is a guanine nucleotide exchange factor (GEF) which may activate RAB9A and RAB9B. It promotes the exchange of GDP to GTP, converting inactive GDP-bound Rab proteins into their active GTP-bound form and may play a role in late endosomes back to trans-Golgi network/TGN transport.
Synonyms:	FAM31D; KIAA1277
Note:	Immunogen Sequence Homology: Human: 100%; Rat: 93%; Bovine: 91%; Dog: 86%; Pig: 86%; Mouse: 86%; Horse: 79%



[View online »](#)

Product images:



Host: Rabbit; Target Name: DENND2A; Sample
Tissue: 293T Whole Cell lysates; Antibody
Dilution: 1.0 ug/ml