

Product datasheet for **TA335581**

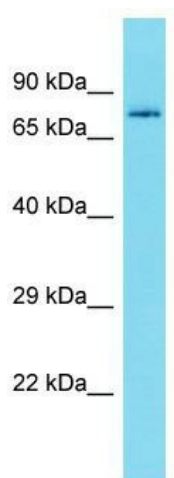
WDR42A (DCAF8) Rabbit Polyclonal Antibody

Product data:

Product Type:	Primary Antibodies
Applications:	WB
Recommended Dilution:	WB
Reactivity:	Human
Host:	Rabbit
Isotype:	IgG
Clonality:	Polyclonal
Immunogen:	The immunogen for Anti-DCAF8 Antibody is: synthetic peptide directed towards the C-terminal region of Human DCAF8. Synthetic peptide located within the following region: LPVLATSGLDHDKIWAAPTAEASTELTGLKDVIKKPKRERDEDSLHQTDL
Formulation:	Liquid. Purified antibody supplied in 1x PBS buffer with 0.09% (w/v) sodium azide and 2% sucrose. <i>Note that this product is shipped as lyophilized powder to China customers.</i>
Purification:	Affinity Purified
Conjugation:	Unconjugated
Storage:	Store at -20°C as received.
Stability:	Stable for 12 months from date of receipt.
Predicted Protein Size:	67 kDa
Gene Name:	DDB1 and CUL4 associated factor 8
Database Link:	NP_056541 Entrez Gene 50717 Human Q5TAQ9
Background:	This gene encodes a WD repeat-containing protein that interacts with the Cul4-Ddb1 E3 ligase macromolecular complex. Multiple alternatively spliced transcript variants have been found for this gene.
Synonyms:	GAN2; H326; WDR42A
Note:	Immunogen Sequence Homology: Dog: 100%; Pig: 100%; Rat: 100%; Horse: 100%; Human: 100%; Mouse: 100%; Bovine: 100%; Rabbit: 100%; Zebrafish: 100%; Guinea pig: 100%



[View online »](#)

Product images:

Host: Rabbit; Target Name: DCAF8; Sample Tissue: 721_B Whole Cell lysates; Antibody Dilution: 1.0 ug/ml. DCAF8 is strongly supported by BioGPS gene expression data to be expressed in Human 721_B cells