

Product datasheet for **TA335580**

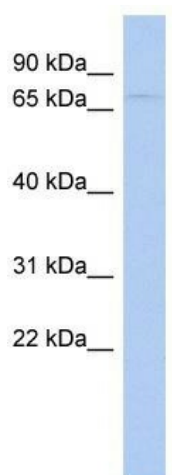
WDPCP Rabbit Polyclonal Antibody

Product data:

Product Type:	Primary Antibodies
Applications:	WB
Recommended Dilution:	WB
Reactivity:	Human
Host:	Rabbit
Isotype:	IgG
Clonality:	Polyclonal
Immunogen:	The immunogen for Anti-WDPCP Antibody: synthetic peptide directed towards the N terminal of human LOC51057. Synthetic peptide located within the following region: LAQNKLCFIQFTKKMESSDVNKRLEKLSALDYKIFYEIPGPINKTTERH
Formulation:	Liquid. Purified antibody supplied in 1x PBS buffer with 0.09% (w/v) sodium azide and 2% sucrose. <i>Note that this product is shipped as lyophilized powder to China customers.</i>
Purification:	Affinity Purified
Conjugation:	Unconjugated
Storage:	Store at -20°C as received.
Stability:	Stable for 12 months from date of receipt.
Predicted Protein Size:	68 kDa
Gene Name:	WD repeat containing planar cell polarity effector
Database Link:	NP_056994 Entrez Gene 51057 Human O95876
Background:	The specific function of this protein remains unknown.
Synonyms:	BBS15; C2orf86; CHDTHP; FRITZ; FRTZ
Note:	Immunogen Sequence Homology: Pig: 100%; Rat: 100%; Human: 100%; Guinea pig: 100%; Horse: 92%; Mouse: 91%; Dog: 85%; Bovine: 85%; Rabbit: 79%



[View online »](#)

Product images:

WB Suggested Anti-WDPCP Antibody Titration:
0.2-1 ug/ml; ELISA Titer: 1:312500; Positive
Control: Human Placenta