

## Product datasheet for **TA335579**

### YBX2 Rabbit Polyclonal Antibody

#### Product data:

Product Type:	Primary Antibodies
Applications:	WB
Recommended Dilution:	WB
Reactivity:	Human
Host:	Rabbit
Isotype:	IgG
Clonality:	Polyclonal
Immunogen:	The immunogen for Anti-YBX2 Antibody: synthetic peptide directed towards the N terminal of human YBX2. Synthetic peptide located within the following region: EPQKGGGAGGGGGAASGPAAGTPSAPGSRTPGNPATAVSGTPAPPARSQA
Formulation:	Liquid. Purified antibody supplied in 1x PBS buffer with 0.09% (w/v) sodium azide and 2% sucrose. <i>Note that this product is shipped as lyophilized powder to China customers.</i>
Purification:	Affinity Purified
Conjugation:	Unconjugated
Storage:	Store at -20°C as received.
Stability:	Stable for 12 months from date of receipt.
Predicted Protein Size:	38 kDa
Gene Name:	Y-box binding protein 2
Database Link:	<a href="#">NP_057066</a> <a href="#">Entrez Gene 51087 Human</a> <a href="#">Q9Y2T7</a>



[View online »](#)

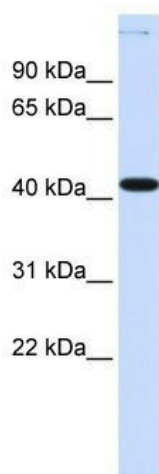
**Background:**

YBX2 is a member of the Y box multigene family of proteins; it contains the cold shock domain that is highly conserved among all Y box proteins and four basic/aromatic islands. By Northern blotting and immunoblotting, MSY2 appears to be a germ cell-specific protein in the testis. In the ovary, MSY2 is present exclusively in diplotene-stage and mature oocytes. MSY2 is maternally inherited in the one-cell-stage embryo but is not detected in the late two-cell-stage embryo. This loss of MSY2 is coincident with the bulk degradation of maternal mRNAs in the two-cell embryo. YBX2 is a germ-cell specific member of the vertebrate Y box family of nucleic acid-binding proteins (Gu et al., 1998 [PubMed 9780336]; Tekur et al., 1999 [PubMed 10100484]). [supplied by OMIM]

**Synonyms:**

CONTRIN; CSDA3; DBPC; MSY2

**Note:** Immunogen Sequence Homology: Pig: 100%; Human: 100%; Guinea pig: 100%; Dog: 93%; Rat: 93%; Mouse: 93%; Bovine: 86%

**Product images:**

WB Suggested Anti-YBX2 Antibody Titration: 0.2-1 ug/ml; ELISA Titer: 1:1562500; Positive Control: Human Lung