

Product datasheet for **TA335578**

YBX2 Rabbit Polyclonal Antibody

Product data:

Product Type:	Primary Antibodies
Applications:	IHC, WB
Recommended Dilution:	WB, IHC
Reactivity:	Human
Host:	Rabbit
Isotype:	IgG
Clonality:	Polyclonal
Immunogen:	The immunogen for Anti-YBX2 Antibody: synthetic peptide directed towards the middle region of human YBX2. Synthetic peptide located within the following region: RKSRRFIPRPPSVAPPPMVAEIPSAGTGPGSKGERAEDSGQRPRRWCPPP
Formulation:	Liquid. Purified antibody supplied in 1x PBS buffer with 0.09% (w/v) sodium azide and 2% sucrose. <i>Note that this product is shipped as lyophilized powder to China customers.</i>
Purification:	Protein A purified
Conjugation:	Unconjugated
Storage:	Store at -20°C as received.
Stability:	Stable for 12 months from date of receipt.
Predicted Protein Size:	39 kDa
Gene Name:	Y-box binding protein 2
Database Link:	NP_057066 Entrez Gene 51087 Human Q9Y2T7



[View online »](#)

Background:

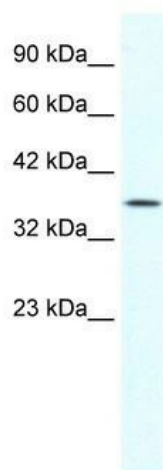
YBX2 is a member of the Y box multigene family of proteins; it contains the cold shock domain that is highly conserved among all Y box proteins and four basic/aromatic islands. By Northern blotting and immunoblotting, MSY2 appears to be a germ cell-specific protein in the testis. In the ovary, MSY2 is present exclusively in diplotene-stage and mature oocytes. MSY2 is maternally inherited in the one-cell-stage embryo but is not detected in the late two-cell-stage embryo. This loss of MSY2 is coincident with the bulk degradation of maternal mRNAs in the two-cell embryo.

Synonyms:

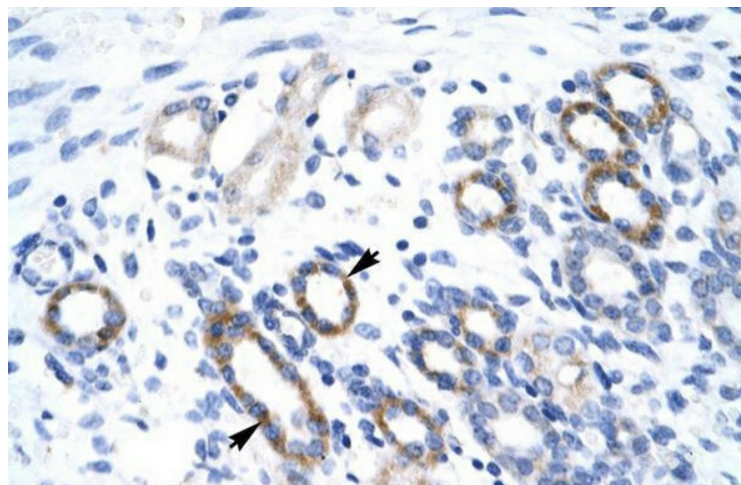
CONTRIN; CSDA3; DBPC; MSY2

Note:

Immunogen Sequence Homology: Human: 100%; Dog: 86%; Pig: 86%; Rat: 86%; Horse: 86%; Mouse: 86%; Bovine: 86%; Rabbit: 86%; Guinea pig: 86%

Product images:

WB Suggested Anti-YBX2 Antibody Titration: 1.0 ug/ml; ELISA Titer: 1:12500; Positive Control: HepG2 cell lysate



Human kidney