

## Product datasheet for **TA335577**

### SCCPDH Rabbit Polyclonal Antibody

#### Product data:

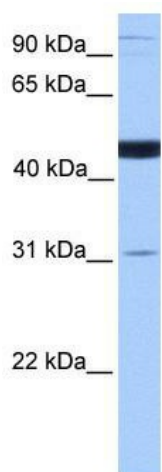
Product Type:	Primary Antibodies
Applications:	WB
Recommended Dilution:	WB
Reactivity:	Human
Host:	Rabbit
Isotype:	IgG
Clonality:	Polyclonal
Immunogen:	The immunogen for Anti-SCCPDH Antibody: synthetic peptide directed towards the C terminal of human SCCPDH. Synthetic peptide located within the following region: FSFGYFSKQGPTQKQIDAASFTLTFFGQGYSQGTGTDKNKPNIKICTQVK
Formulation:	Liquid. Purified antibody supplied in 1x PBS buffer with 0.09% (w/v) sodium azide and 2% sucrose. <i>Note that this product is shipped as lyophilized powder to China customers.</i>
Purification:	Affinity Purified
Conjugation:	Unconjugated
Storage:	Store at -20°C as received.
Stability:	Stable for 12 months from date of receipt.
Predicted Protein Size:	47 kDa
Gene Name:	saccharopine dehydrogenase (putative)
Database Link:	<a href="#">NP_057086</a> <a href="#">Entrez Gene 51097 Human</a> <a href="#">Q8NBX0</a>
Background:	SCCPDH belongs to the saccharopine dehydrogenase family. The exact function of SCCPDH remains unknown.
Synonyms:	CGI-49; NET11
Note:	Immunogen Sequence Homology: Human: 100%; Horse: 86%; Dog: 79%; Pig: 79%; Rat: 79%; Guinea pig: 79%



[View online »](#)

Protein Families: Transmembrane

### Product images:



WB Suggested Anti-SCCPDH Antibody Titration:  
0.2-1 ug/ml; Positive Control: Human Muscle