

Product datasheet for **TA335576**

SCCPDH Rabbit Polyclonal Antibody

Product data:

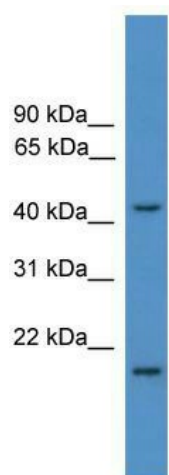
Product Type:	Primary Antibodies
Applications:	WB
Recommended Dilution:	WB
Reactivity:	Human
Host:	Rabbit
Isotype:	IgG
Clonality:	Polyclonal
Immunogen:	The immunogen for Anti-SCCPDH Antibody: synthetic peptide directed towards the middle region of human SCCPDH. Synthetic peptide located within the following region: SDVSVVRRRTQRYLYENLEESPVQYAAAYVTGGITSVIKLMFAGLFFLFFV
Formulation:	Liquid. Purified antibody supplied in 1x PBS buffer with 0.09% (w/v) sodium azide and 2% sucrose. <i>Note that this product is shipped as lyophilized powder to China customers.</i>
Purification:	Affinity Purified
Conjugation:	Unconjugated
Storage:	Store at -20°C as received.
Stability:	Stable for 12 months from date of receipt.
Predicted Protein Size:	47 kDa
Gene Name:	saccharopine dehydrogenase (putative)
Database Link:	NP_057086 Entrez Gene 51097 Human Q8NBX0
Background:	SCCPDH belongs to the saccharopine dehydrogenase family. The exact function of SCCPDH remains unknown.
Synonyms:	CGI-49; NET11
Note:	Immunogen Sequence Homology: Human: 100%; Horse: 93%; Dog: 86%; Pig: 86%; Rat: 86%; Mouse: 86%; Bovine: 86%; Rabbit: 86%; Guinea pig: 86%



[View online »](#)

Protein Families: Transmembrane

Product images:



WB Suggested Anti-SCCPDH Antibody Titration:
0.2-1 ug/ml; ELISA Titer: 1: 62500; Positive
Control: Human Liver