

Product datasheet for **TA335575**

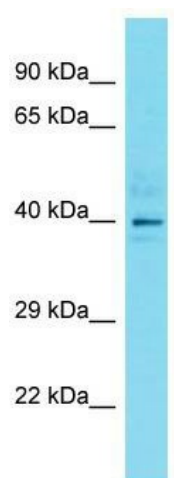
DC2L1 (DYNC2LI1) Rabbit Polyclonal Antibody

Product data:

Product Type:	Primary Antibodies
Applications:	WB
Recommended Dilution:	WB
Reactivity:	Human
Host:	Rabbit
Isotype:	IgG
Clonality:	Polyclonal
Immunogen:	The immunogen for Anti-DYNC2LI1 Antibody is: synthetic peptide directed towards the C-terminal region of Human DYNC2LI1. Synthetic peptide located within the following region: EKLFPKSIINTLKDIDKDPARDPQYAENEVDDEMRIQKDLELEQYKRSSSKS
Formulation:	Liquid. Purified antibody supplied in 1x PBS buffer with 0.09% (w/v) sodium azide and 2% sucrose. <i>Note that this product is shipped as lyophilized powder to China customers.</i>
Purification:	Affinity Purified
Conjugation:	Unconjugated
Storage:	Store at -20°C as received.
Stability:	Stable for 12 months from date of receipt.
Predicted Protein Size:	39 kDa
Gene Name:	dynein cytoplasmic 2 light intermediate chain 1
Database Link:	NP_057092 Entrez Gene 51626 Human Q8TCX1
Background:	DYNC2LI1 may function as a motor for intraflagellar retrograde transport and functions in cilia biogenesis.
Synonyms:	CGI-60; D2LIC; LIC3; SRTD15
Note:	Immunogen Sequence Homology: Human: 100%; Dog: 93%; Horse: 93%; Bovine: 93%; Rat: 92%; Rabbit: 86%; Mouse: 85%; Pig: 79%; Guinea pig: 79%



[View online »](#)

Product images:

Host: Rabbit; Target Name: DYNC2L1; Sample
Tissue: Jurkat Whole Cell lysates; Antibody
Dilution: 1.0 ug/ml