

Product datasheet for **TA335574**

TFB1M Rabbit Polyclonal Antibody

Product data:

Product Type:	Primary Antibodies
Applications:	WB
Recommended Dilution:	WB
Reactivity:	Human
Host:	Rabbit
Isotype:	IgG
Clonality:	Polyclonal
Immunogen:	The immunogen for Anti-TFB1M Antibody: synthetic peptide directed towards the middle region of human TFB1M. Synthetic peptide located within the following region: IIKWLENISCRDGPVYGRQTMLTFQKEVAERLAANTGSKQRSLSVMA
Formulation:	Liquid. Purified antibody supplied in 1x PBS buffer with 0.09% (w/v) sodium azide and 2% sucrose. <i>Note that this product is shipped as lyophilized powder to China customers.</i>
Purification:	Protein A purified
Conjugation:	Unconjugated
Storage:	Store at -20°C as received.
Stability:	Stable for 12 months from date of receipt.
Predicted Protein Size:	39 kDa
Gene Name:	transcription factor B1, mitochondrial
Database Link:	NP_057104 Entrez Gene 51106 Human Q8WVM0
Background:	The transcription of genes from mitochondrial DNA requires a mitochondrial RNA polymerase and a DNA-binding transcription factor. Transcription factor B1 (TFB1M) is a part of this transcription complex. The transcription of genes from mitochondrial DNA requires a mitochondrial RNA polymerase (see POLRMT, MIM 601778) and a DNA-binding transcription factor (see TFAM, MIM 600438). Transcription factor B1 (TFB1M) is a part of this transcription complex. [supplied by OMIM]



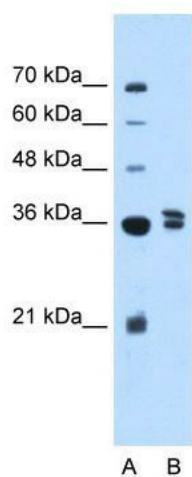
[View online »](#)

Synonyms: CGI-75; CGI75; mtTFB; mtTFB1

Note: Immunogen Sequence Homology: Human: 100%; Dog: 93%; Rabbit: 93%; Pig: 86%; Rat: 86%; Horse: 86%; Mouse: 86%; Bovine: 86%; Guinea pig: 86%; Zebrafish: 79%

Protein Families: Transcription Factors

Product images:



WB Suggested Anti-TFB1M Antibody Titration: 2.5 ug/ml; ELISA Titer: 1:312500; Positive Control: 721_B cell lysate TFB1M is supported by BioGPS gene expression data to be expressed in 721_B