

Product datasheet for **TA335572**

SUV420h1 (KMT5B) Rabbit Polyclonal Antibody

Product data:

Product Type:	Primary Antibodies
Applications:	IHC, WB
Recommended Dilution:	IHC, WB
Reactivity:	Human
Host:	Rabbit
Isotype:	IgG
Clonality:	Polyclonal
Immunogen:	The immunogen for Anti-SUV420H1 Antibody: synthetic peptide directed towards the C terminal of human SUV420H1. Synthetic peptide located within the following region: NNGFNSSGSGSSSTKLKIQKRDEENRGSYTEGLHENGVCSDPLSLLESR
Formulation:	Liquid. Purified antibody supplied in 1x PBS buffer with 0.09% (w/v) sodium azide and 2% sucrose. <i>Note that this product is shipped as lyophilized powder to China customers.</i>
Purification:	Protein A purified
Conjugation:	Unconjugated
Storage:	Store at -20°C as received.
Stability:	Stable for 12 months from date of receipt.
Predicted Protein Size:	52 kDa
Gene Name:	lysine methyltransferase 5B
Database Link:	NP_057112 Entrez Gene 51111 Human Q4FZB7
Background:	SUV420H1 is a protein that contains a SET domain. SET domains appear to be protein-protein interaction domains that mediate interactions with a family of proteins that display similarity with dual-specificity phosphatases (dsPTPases). The function of this gene has not been determined.
Synonyms:	CGI-85; CGI85; SUV420H1



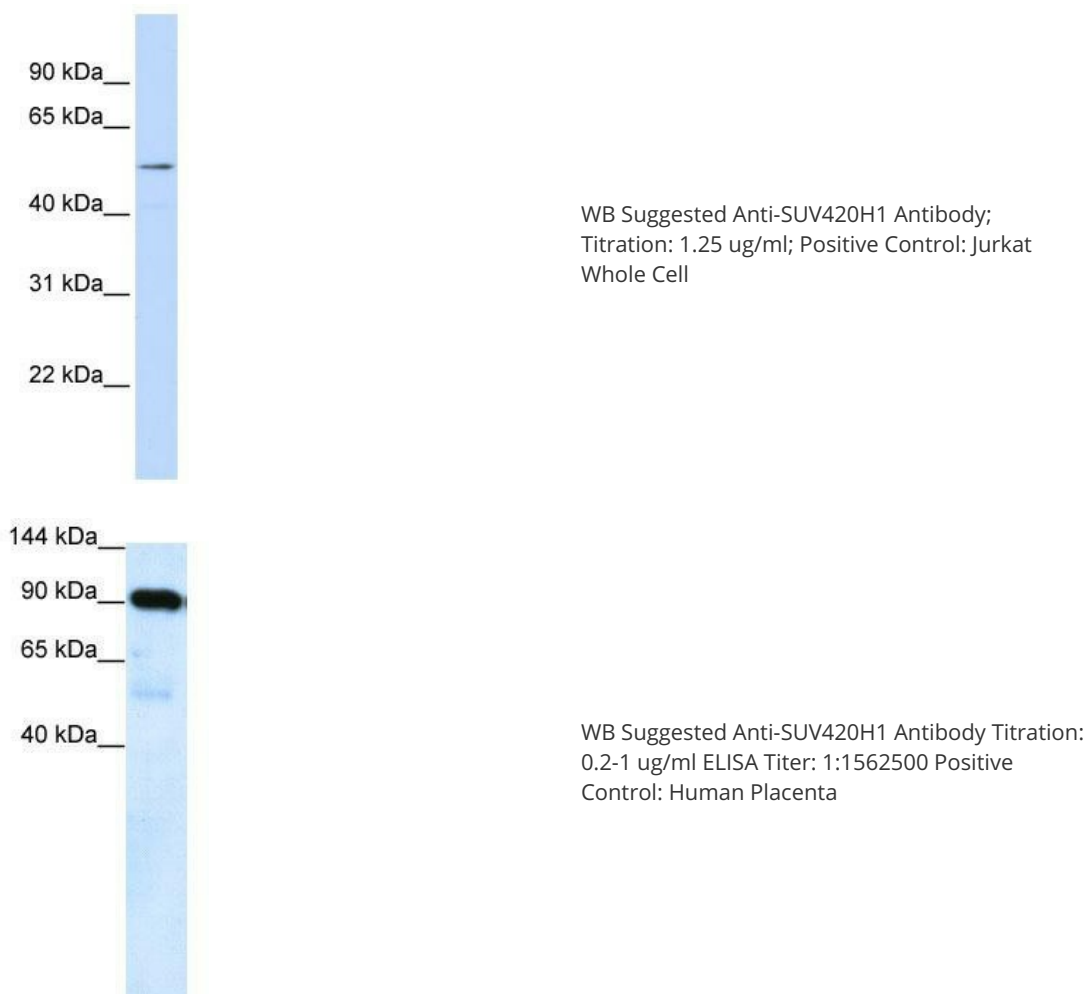
[View online »](#)

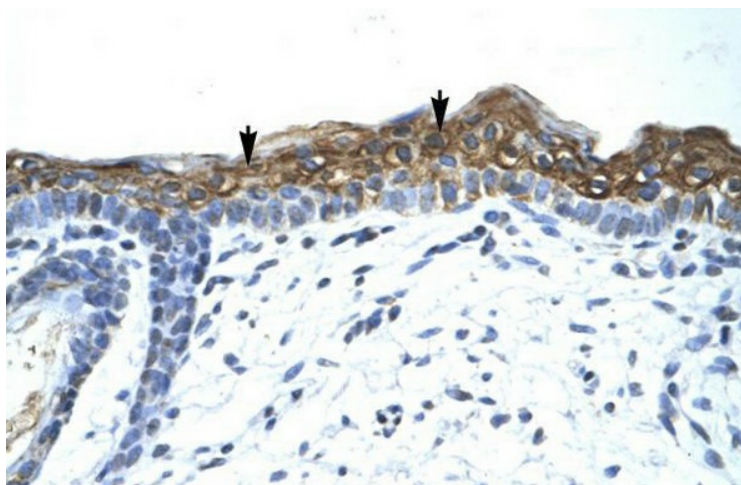
Note: Immunogen Sequence Homology: Human: 100%; Rat: 93%; Pig: 92%; Horse: 92%; Guinea pig: 92%; Mouse: 91%; Dog: 86%

Protein Families: Druggable Genome

Protein Pathways: Lysine degradation

Product images:





Rabbit Anti-SUV420H1 Antibody Paraffin
Embedded Tissue: Human Skin Cellular Data:
Squamous epithelial cells Antibody
Concentration: 4.0-8.0 ug/ml Magnification: 400X