

Product datasheet for **TA335570**

COPZ1 Rabbit Polyclonal Antibody

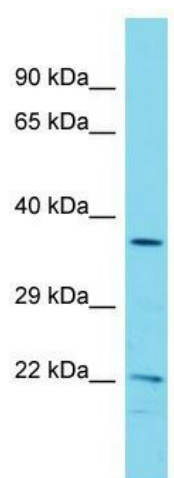
Product data:

Product Type:	Primary Antibodies
Applications:	WB
Recommended Dilution:	WB
Reactivity:	Human
Host:	Rabbit
Isotype:	IgG
Clonality:	Polyclonal
Immunogen:	The immunogen for Anti-COPZ1 Antibody is: synthetic peptide directed towards the middle region of Human COPZ1. Synthetic peptide located within the following region: YTVKAILILDNDGDRLFAKYDDTYPVKEQKAFEKNIFNKTHRTDSEIA
Formulation:	Liquid. Purified antibody supplied in 1x PBS buffer with 0.09% (w/v) sodium azide and 2% sucrose. <i>Note that this product is shipped as lyophilized powder to China customers.</i>
Purification:	Affinity Purified
Conjugation:	Unconjugated
Storage:	Store at -20°C as received.
Stability:	Stable for 12 months from date of receipt.
Predicted Protein Size:	21 kDa
Gene Name:	coatomer protein complex subunit zeta 1
Database Link:	NP_057141 Entrez Gene 22818 Human P61923
Background:	The function of this protein remains unknown.
Synonyms:	CGI-120; COPZ; HSPC181; zeta-COP; zeta1-COP
Note:	Immunogen Sequence Homology: Rat: 100%; Human: 100%; Mouse: 100%; Rabbit: 100%; Dog: 93%; Horse: 93%; Bovine: 93%; Pig: 86%; Guinea pig: 86%; Goat: 79%; Zebrafish: 79%



[View online »](#)

Product images:



Host: Rabbit; Target Name: COPZ1; Sample
Tissue: COLO205 Whole Cell lysates; Antibody
Dilution: 1.0 ug/ml