

Product datasheet for **TA335569**

COPZ1 Rabbit Polyclonal Antibody

Product data:

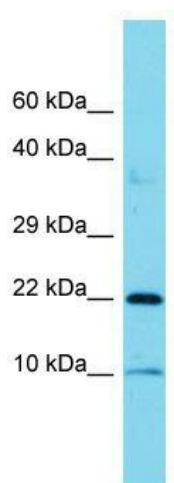
Product Type:	Primary Antibodies
Applications:	WB
Recommended Dilution:	WB
Reactivity:	Human
Host:	Rabbit
Isotype:	IgG
Clonality:	Polyclonal
Immunogen:	The immunogen for Anti-COPZ1 Antibody is: synthetic peptide directed towards the C-terminal region of Human COPZ1. Synthetic peptide located within the following region: DEIVDGGVILESDPQQVVHRVALRGEDVPLTEQTVSQVLQSAKEQIKWSL
Formulation:	Liquid. Purified antibody supplied in 1x PBS buffer with 0.09% (w/v) sodium azide and 2% sucrose. <i>Note that this product is shipped as lyophilized powder to China customers.</i>
Purification:	Affinity Purified
Conjugation:	Unconjugated
Storage:	Store at -20°C as received.
Stability:	Stable for 12 months from date of receipt.
Predicted Protein Size:	20 kDa
Gene Name:	coatamer protein complex subunit zeta 1
Database Link:	NP_057141 Entrez Gene 22818 Human P61923
Background:	This gene encodes a subunit of the cytoplasmic coatamer protein complex, which is involved in autophagy and intracellular protein trafficking. The coatamer protein complex is comprised of seven subunits and functions as the coat protein of coat protein complex (COP)I-vesicles. Alternative splicing results in multiple transcript variants.
Synonyms:	CGI-120; COPZ; HSPC181; zeta-COP; zeta1-COP



[View online »](#)

Note: Immunogen Sequence Homology: Dog: 100%; Pig: 100%; Rat: 100%; Goat: 100%; Horse: 100%; Human: 100%; Mouse: 100%; Bovine: 100%; Rabbit: 100%; Guinea pig: 100%; Zebrafish: 93%

Product images:



Host: Rabbit; Target Name: COPZ1; Sample Tissue: Placenta lysates; Antibody Dilution: 1.0 ug/ml