

Product datasheet for **TA335567**

ZFR Rabbit Polyclonal Antibody

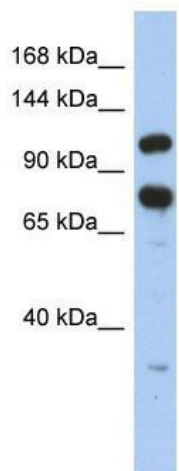
Product data:

Product Type:	Primary Antibodies
Applications:	IHC, WB
Recommended Dilution:	WB, IHC
Reactivity:	Human
Host:	Rabbit
Isotype:	IgG
Clonality:	Polyclonal
Immunogen:	The immunogen for Anti-ZFR Antibody: synthetic peptide directed towards the middle region of human ZFR. Synthetic peptide located within the following region: RQIHKVLGMDPLPQMSQRFNIHNNRKRRRRSDSGVDGF EAEGKKDKKDYDN
Formulation:	Liquid. Purified antibody supplied in 1x PBS buffer with 0.09% (w/v) sodium azide and 2% sucrose. <i>Note that this product is shipped as lyophilized powder to China customers.</i>
Purification:	Affinity Purified
Conjugation:	Unconjugated
Storage:	Store at -20°C as received.
Stability:	Stable for 12 months from date of receipt.
Predicted Protein Size:	117 kDa
Gene Name:	zinc finger RNA binding protein
Database Link:	NP_057191 Entrez Gene 51663 Human Q96KR1
Background:	ZFR is critical for Staufen 2 isoform specific nucleocytoplasmic shuttling in neurons.
Synonyms:	SPG71; ZFR1
Note:	Immunogen Sequence Homology: Dog: 100%; Rat: 100%; Horse: 100%; Human: 100%; Mouse: 100%; Bovine: 100%; Rabbit: 100%; Zebrafish: 100%

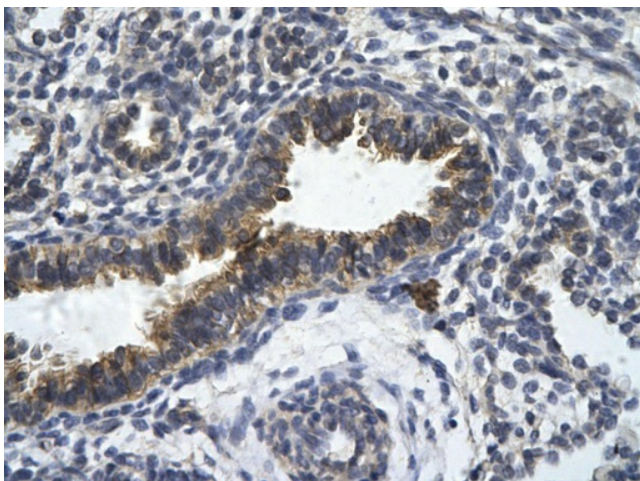


[View online »](#)

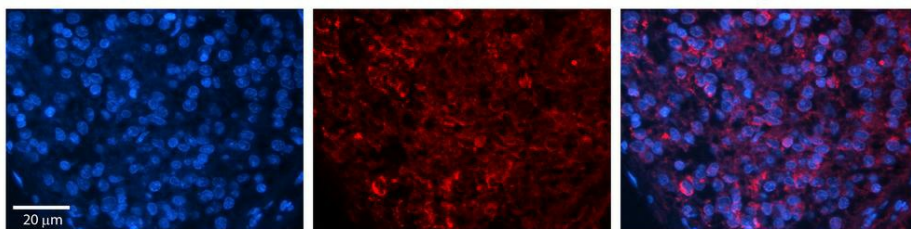
Product images:



WB Suggested Anti-ZFR Antibody Titration: 0.2-1 ug/ml; ELISA Titer: 1:62500; Positive Control: HT1080 cell lysate. ZFR is strongly supported by BioGPS gene expression data to be expressed in Human HT1080 cells



Rabbit Anti-ZFR Antibody; Paraffin Embedded Tissue: Human bronchiole epithelium; Cellular Data: Epithelial cells of renal tubule; Antibody Concentration: 4.0-8.0 ug/ml; Magnification: 400X



Rabbit Anti-ZFR Antibody; Formalin Fixed Paraffin Embedded Tissue: Human Pineal Tissue; Observed Staining: Cytoplasmic and nuclear in pinelocytes & interstitial cells; Primary Antibody Concentration: 1:100; Other Working Concentrations: 1/600; Secondary Antibody: Donkey anti-Rabbit-Cy3; Secondary Antibody Concentration: 1:200; Magnification: 20X; Exposure Time: 0.5-2.0 sec;