

Product datasheet for **TA335564**

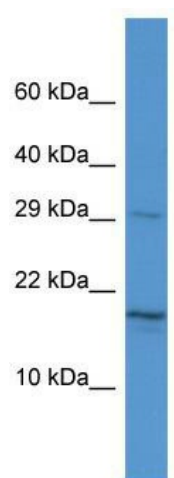
JPT1 Rabbit Polyclonal Antibody

Product data:

Product Type:	Primary Antibodies
Applications:	WB
Recommended Dilution:	WB
Reactivity:	Human
Host:	Rabbit
Isotype:	IgG
Clonality:	Polyclonal
Immunogen:	The immunogen for Anti-HN1 Antibody is: synthetic peptide directed towards the middle region of Human HN1. Synthetic peptide located within the following region: SWAKSAGAKSSGGREDLESSGLQRRNSSEASSGDFDLKKMWTQTCQAAW
Formulation:	Liquid. Purified antibody supplied in 1x PBS buffer with 0.09% (w/v) sodium azide and 2% sucrose. <i>Note that this product is shipped as lyophilized powder to China customers.</i>
Purification:	Affinity Purified
Conjugation:	Unconjugated
Storage:	Store at -20°C as received.
Stability:	Stable for 12 months from date of receipt.
Predicted Protein Size:	19 kDa
Gene Name:	hematological and neurological expressed 1
Database Link:	NP_057269 Entrez Gene 51155 Human Q9UK76
Background:	The function of this protein remains unknown.
Synonyms:	ARM2; HN1A
Note:	Immunogen Sequence Homology: Pig: 100%; Rat: 100%; Human: 100%; Guinea pig: 100%; Horse: 93%; Bovine: 93%; Dog: 86%; Mouse: 85%



[View online »](#)

Product images:

Host: Rabbit; Target Name: HN1; Sample Tissue: HeLa Whole Cell lysates; Antibody Dilution: 1.0 ug/ml. HN1 is supported by BioGPS gene expression data to be expressed in HeLa